

SPEC09



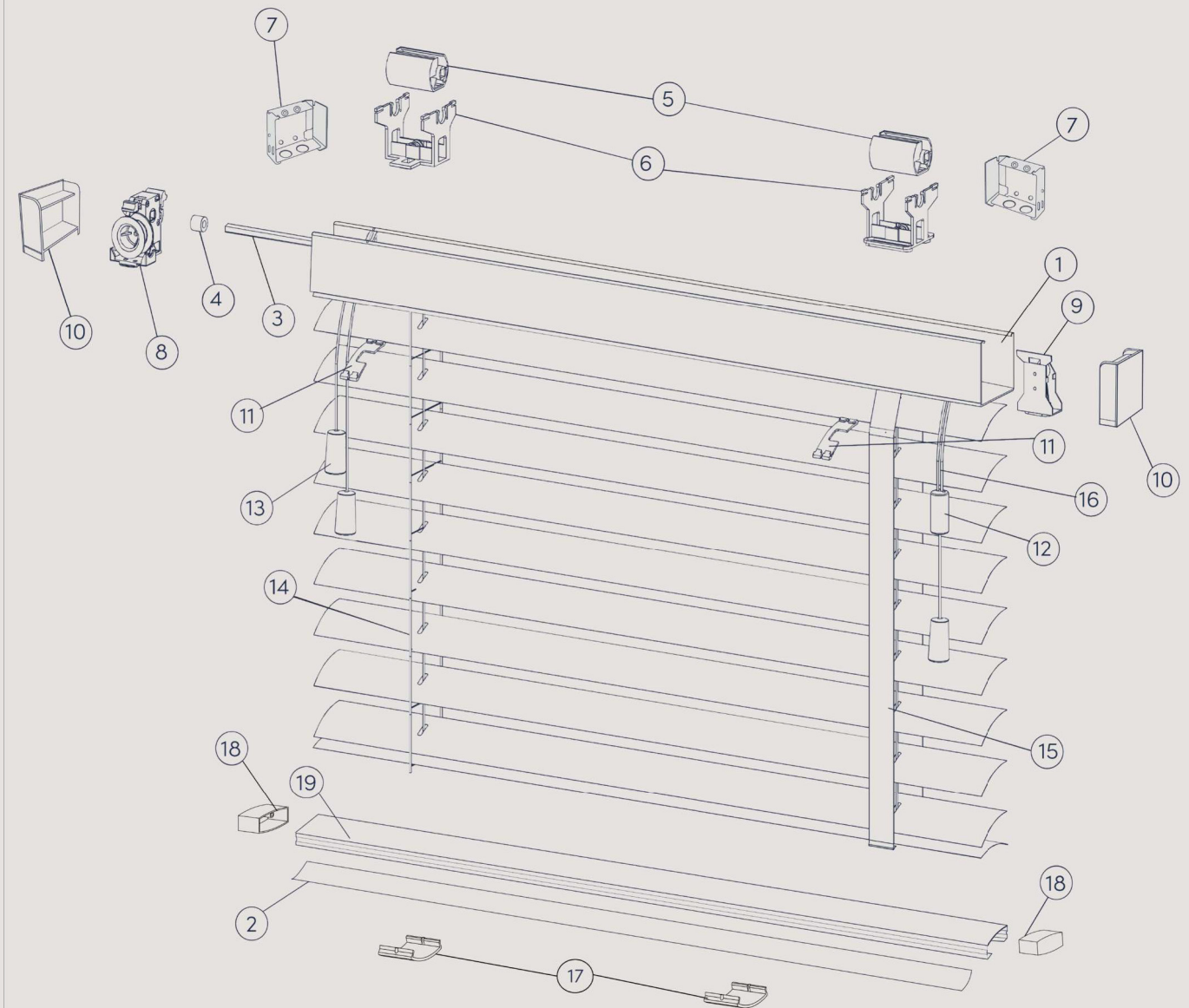
# ALUMITEX

35/50MM ALUMINIUM VENETIANS SPECIFICATION

VERSION 2

# ALUMITEX

## 35/50MM ALUMINIUM VENETIANS SPECIFICATION



- 1: Headrail
- 2: Slat
- 3: Tilt Rod
- 4: Tilt Rod Support
- 5: Tape Roll
- 6: Tape Roll Support
- 7: Box Bracket
- 8: Tilt Mechanism
- 9: Cord Lock
- 10: Headrail End Cap

- 11: Tape Spacer/Top Slat Clip
- 12: Cord Condenser
- 13: Tassel
- 14: Ladder String
- 15: Ladder Tape
- 16: Cord
- 17: Tape Clip Bottom Bar
- 18: Bottom Bar End Cap
- 19: Bottom Bar

# ALUMITEX

## 35/50MM ALUMINIUM VENETIANS SPECIFICATION

### DIMENSIONS

SLAT SIZE	HEADRAIL SIZE	MIN WIDTH	MAX WIDTH	MIN DROP	MAX DROP
35mm	38mm x 37mm	210mm	2900mm	120mm	3500mm
50mm	57mm x 51mm	210mm	2900mm	120mm	3500mm

SLAT WIDTH	THICKNESS
50mm and 35mm	0.21 mm
	0.21 mm

### TAPES

SLAT SIZE	TAPE WIDTH
35mm	25mm
50mm	25mm (default) and 38mm

### CONTROLS

	STANDARD	OPTIONAL
RAISE CONTROL	Right hand side	Left hand side
TILT CONTROL	Left hand side	Right hand side
TILT OPTIONS	Cords	N/A

Standard Tassel: Clear Plastic

Optional Tassel: Cylinder 55 brushed aluminium tassel – surcharge applies

Blinds with widths 210mm – 300mm have no controls

Blinds with widths 301mm – 455mm have standard controls only

### VALANCE

Valances from the Timberlux collection are available for 50mm slat blinds at a surcharge.

# ALUMITEX

## 35/50MM ALUMINIUM VENETIANS SPECIFICATION

### BRACKETS

- 35mm Alumitex Venetian Blinds are supplied with swivel brackets, which can be top or face fixed.
- 50mm Alumitex Venetian Blinds are supplied with box brackets as standard. Swivel Brackets are also available upon request. Motorised blinds must use box brackets.
- Box brackets can be top, end, or face fixed.
- For 50mm blinds with more than three ladders, additional centre supports are supplied – one bracket per cord.
- Hold down brackets available at a surcharge, and are colour coded to bottom bar endcap.

### STACKING HEIGHT

BLIND DROP (MM)	STACK HEIGHT 35MM SLAT (MM)	STACK HEIGHT 50MM SLAT (MM)
500	115	105
750	145	130
1000	170	145
1250	195	170
1500	220	190
1750	245	210
2000	270	230
2250	300	250
2500	325	270
2750	350	290
3000	375	310
3250	400	330
3500	425	350

Stack heights are measured from top of headrail to bottom of bottombar when pulled tight. Stack heights are for reference only, variance in slat thickness and how the ladder stacks may alter the actual stack height each time the blind is raised.

### CHILD SAFETY

All Alumitex venetians are child safe compliant. All 35mm/50mm blinds come with a Breakaway Cord Condenser & 2 Piece Safety Cleats. The cord condenser is designed to consolidate the pull cords into one string and to break-away under force, stopping any loops from forming. The safety cleats are used to wrap the cord around to keep out of children's reach.

### CORD LENGTHS AND INSTALLATION HEIGHTS

- If the installation height is known, the distance from the floor to bottom of pull cords shall be at least 1.5m.
- If the installation height is not known but the drop of the blind is less than 2.5m, the length of the pull cords shall be less than 1m
- If the installation height is not known but the drop of the blind is more than 2.5m, the length of pull cords shall be less than drop of the blind minus 1.5m.

BLIND TYPE	MINIMUM CONTROL LENGTH (MM)	DEDUCTION MADE WHEN INSTALLATION HEIGHT PROVIDED (MM)	MINIMUM INSTALLATION HEIGHT (MM)
35/50mm Aluminium	350	1500	1850

For example: For a 35/50mm Aluminium blind which has an installation height of 3000mm the controls will be 1500mm.

# ALUMITEX

## 35/50MM ALUMINIUM VENETIANS SPECIFICATION

MAINS POWERED TILT & LIFT MOTORS	MOTORISATION OPTIONS	REMOTE CONTROL OPTIONS
	Somfy Sonesse 40 – 6/20 RTS or WT	Situo Single Channel Remote
	Somfy Sonesse 40 9-12 RTS or WT	Situo 1 RTS
BATTERY POWERED TILT-ONLY MOTOR	Somfy Tilt Only RTS	Situo 1 VAR RTS
		Situo 5 VAR RTS
		Telis 16
		Somfy® Smooove Wall Switch

POWER PACK
Somfy 12v Li-ion rechargeable battery pack
Standard battery wand
12v AC/DC Power Supply
Solar Panel & 12v Li-ion Ext Battery

- Box brackets supplied with all motorised blinds.
- 35mm Alumitex Blinds cannot be motorised.
- Taped blinds can only be motorised with tilt-only motors.
- For tilt-only motorisation, minimum blind width is 450mm.
- For Tilt & Lift motorisation, minimum width is 710mm.