



VERTICAL BLINDS





THE VERTICAL BLINDS SYSTEM

Benthin Vertical Blinds are suitable for a wide range of applications and are characterised by their flexibility, durability and the efficient, versatile solar protection they provide. The louvres can be adjusted to follow the course of the sun and are an excellent way to control and direct the light.

Verticals can be used to create a variety of very different lighting effects, as there are almost infinite possibilities for regulating the incoming light depending on the position of the louvres.

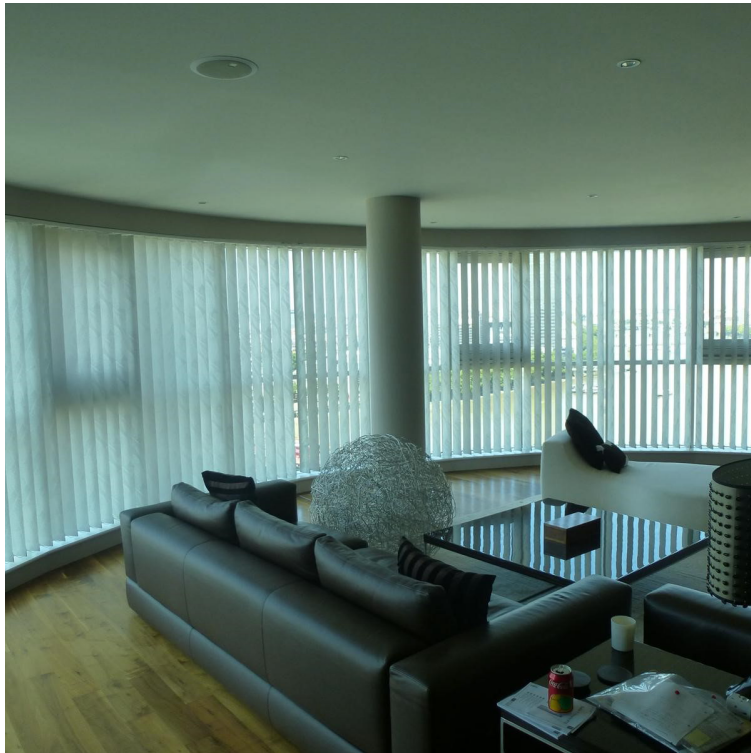
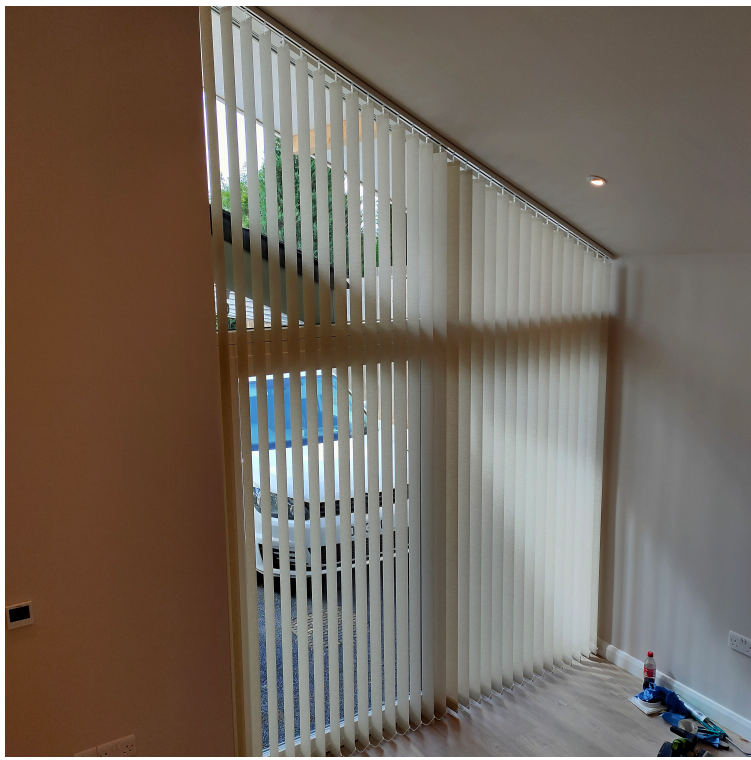
For private homes the focus is on the decorative aspect, as well as the solar protection. The vertical blind is an almost unique product that has its own distinct character and yet leaves a great deal of scope for architectural design.

Verticals are particularly suitable for use in office buildings, as they comply with all the requirements of the Construction or Thermal Insulation Ordinance and with the guidelines for VDU workstations.

Louvre widths of 89 and 127 mm are standard, but alternative options of 63, 70, 100 and 250 mm are available.

For large projects, if requested the rails can be supplied in special colours so they can be colour co-ordinated with existing architectural elements of the building.

More than 20 different system shapes, various stacking versions and control systems that can be placed on the left or right permit a synthesis of decoration and sun protection.



VERTICALS IN EVERY SHAPE

For many years now, the verticals system from Benthin has been the most complete and most reliable system on the market, covering all areas of use.

Modular system components and the most efficient production equipment in the industry are available from a single supplier.

We aim for variety

Whether straight, curved, slope or top and bottom track, we can offer the appropriate solution for every shape, in any desired application.

The smooth-running monogear (180° rotation) with ball chain operation, the motor version and the standard version all provide optimal operating comfort.

The newly developed and child-safe control rod can be used on lengths up to 7.0 m and heights up to 3.0 m.

Rapid production – the key to success

- in large and small quantities.
- for the production of both louvres and head rails.
- for standard products and special requests.



A RANGE OF CONTROL OPTIONS

The IQ3 motor [1]

Our motor solution offers greater intelligence. In addition to the well-known function of sideways blind travel and 180° rotation, the IQ3 motor is equipped with a decorative setting, an intermediate stop function and 3 speeds. Overload detection offers maximum safety.

An integrated RTS radio receiver ensures Somfy compatibility.

Radio transmitters incl. MY function optimise convenient operation.

Chain/cord [2], operating comfort as standard

A bead chain (Ø4.5 x 6 mm) to tilt the louvres and a cord pull to move the blinds sideways.

One wand [3] that can do everything

Tilt the louvres and draw them across the blind with one hand by simply using the traversing wand.

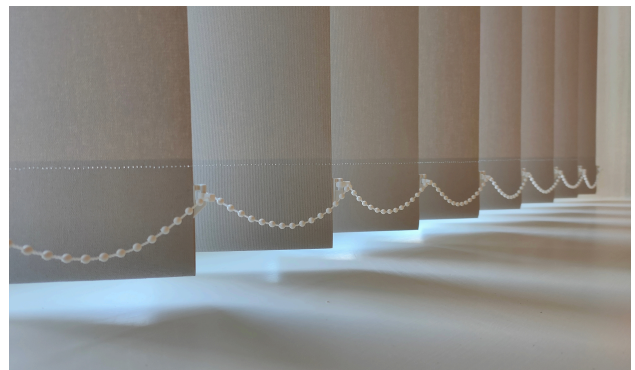
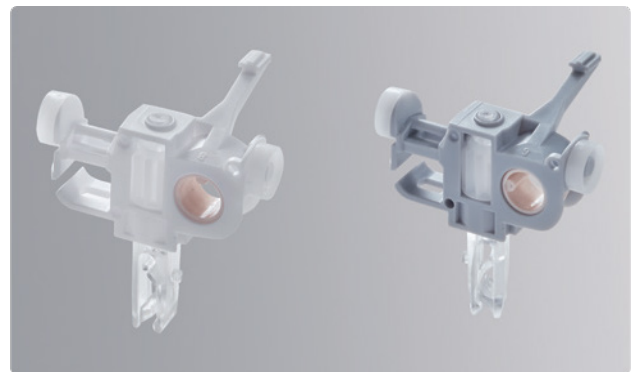
The wand is also a good choice when it comes to child safety.

The monogear [4] for ease of operation

The monogear guarantees convenient and child safety 180° tilting and movement by way of continuous loop chain operation with chain guard.

Tilt wand/cord [5], a neat alternative option

Tilt the louvres using a tilt wand, and draw them across with a cord pull.



SAFE AND SYSTEMATIC TECHNOLOGY

The Benthin Vertical System, with its tried-and-tested traveller with integrated friction clutch, stainless steel spacers and detachable clear hooks, enables the blinds to be used for a wide range of applications. An open cord channel enables easy assembly.

The end stoppers can be assembled from outside and cover the release mechanism and the louvre stack can be easily moved out of the way to clean the window.

Our verticals are characterised by the fact that the stacking width of the louvres is particularly small when the blinds are pulled back.

Thanks to the adjustable end retainer, the blind can be moved sideways right to the end of the rail if wished.

Powder-coated profiles, clips and wall brackets in four colours with a fine textured surface and perfectly matching plastic components.

Automated production as the key to success

Benthin offers an extensive programme of production equipment enabling high quality vertical blinds to be produced in greater quantities.

High-performance machines for producing louvres and rails are vital to secure the company's position in the market.

The new LS 1700/2 louvre machine with the option of processing sealed-in bottom weights demonstrates how our technologies are constantly being developed.

Vertical Blinds • Vertikaljalousie • Verticaux •

BENTHIN

Tracks • Schienen • Rails / Shaft • Nutuelle • Axe rainuré

Description Beschreibung Description	Part No. Art.-Nr. Ref. N°	Prices - Motor Delivery Time Preis - Motor-Lieferzeit Prix - Délai de livraison	V_01	
Track • Schiene • Rail white structure + weiß	90408000	96 m	A	
struktur + blanc structure		96 m	A	
(RAL 9016) grey structure + grau struktur + gris structure (RAL 7040)	90502008	96 m	A	
black structure + schwarz struktur + noir structure	90408020 (RAL 9005) 6m anthracite structure + anthrazit struktur + anthracite structure	96 m	C	
90502015 (RAL 7016)	6m	96 m	C	
anodised + eloxiert + anodisé	6 m 90500000	96 m	A	
silver + silber + argenté (EV1)	6 m 90500008	96 m	C	
white + weiß + blanc	6 m 90501000	96 m	A	
black + schwarz + noir	6 m 92520000	96 m	B	
DB 703	6 m 92411690	96 m	C	
Track • Schiene • Rail	90502016 (RAL 9016) 7m grey structure + grau struktur + gris structure	112 m	A	
black structure + schwarz struktur + noir structure	90408025	112 m	A	
(RAL 7040) 7m black structure + schwarz struktur + noir structure	90408025	112 m	A	
90408025 (RAL 9005) 7m anthracite structure + anthrazit struktur + anthracite structure	90502017 (RAL 7016) 7m	112 m	C	
anodised + eloxiert + anodisé	7 m 90500000	112 m	A	
silver + silber + argenté (EV1)	7 m 90500008	112 m	C	
white + weiß + blanc	7 m 90501000	112 m	B	
black + schwarz + noir	7 m 92520000	112 m	B	
DB 703	7 m 92411691	112 m	C	
Shaft • Nutuelle • Axe rainuré	92421000	723.6 m	A	
0.03 m		840 m	A	
7.00 m	92719000	6030 m	B	
Bulk • Großverpackung • En vrac	92421001	7000 m	B	
0.03 m	90408000			
7.00 m				
Speed reel • Springring • Anneau Sieger	95812000	500	A	
for shafts • für Nutuelles • pour axes rainurés				

Downloaded from https://www.bentwin.com on 2021-01-20 10:00:00 by user: bentwin.com, IP: 193.50.135.100, User-Agent: Mozilla/5.0 (Windows NT 10.0; Win64; x64) AppleWebKit/537.36 (KHTML, like Gecko) Chrome/88.0.4398.93 Safari/537.36

Version 20-01-2021

Type V010

BENTHIN

V010 - Standard unit with free hanging louvers.

• **Child safety:**
for further
information
please refer to
page 67-69

Dimensions/Measures • Blind width: max. 7.00 m (track length incl. end caps) • **Blind height:** max. 5.00 m (from the top of the track to the lower corner of the louver)
• **Fabric:** max. 35.00 m • Fabric weight and blind size are depending on the control option

Gear/Hardware

• **Free-hanging louvers with manual operation**

Chain and cord (optionally with planetary gear 413)
Travelling wand, Motor gear, Tilt
wand/Cord to free-hanging louvers with
motor operation IQ3-motor system.

• **Track** (40 x 25 mm, max. length 700 m) is made of extruded aluminium (Al Mg Si 0.5 F20), powder-coated in white structure (RAL 9016), grey structure (RAL 7040), black structure (RAL 9005) and anthracite structure (RAL 7016). • **Shaft** (30.0 mm) is made of extruded aluminium (Al Mg Si 0.5 F20).

Torsion-proof grooved shaft, stabilization by stationary shaft support.

• **Traveler** with arm stabiliser (lowering wand without arm) Wear resistant plastic (polyacetal) roller bearing mounted integrated safety clutch, self-lubricating over the product life span.
Replaceable louver hooks (polyacetal).

Stainless steel stand-off brackets (material 1.4310) • **Visible Plastic parts** are matching the colour of the track in white, grey and black.

© 2025 Benthin®. All rights reserved. All rights reserved. Version 23-03-2025

BENTIN

Type V010

V010 - Standard unit with free hanging louvers.

Operation

- **Manual operation** optional left or right. Operation length: freely selectable (in compliance with child safety according to EN 13120:2009+A1:2014). Fixation: Operating chain/Operating cord via Cord/Chain safety device in transparent (P 71) Monogear with the use of a chain securing device (P 71). Control options are made of wear resistant plastic (POM - polyacetal) matching the colour of the track. **Chainlead**

180° rotation of the louvers via plastic ball-chain (Ø4.5 x 6.0 mm). Plastic ball is on a polyester cord (Ø1.4 mm) in white, grey and black. Movement by pull cord (Ø2.1 mm) made of polyester in white, grey and black. Optionally with planetary gear

Travelling wand

180° rotation and movement of the louvers via aluminium wand (Length max. 1.50 m) in white, grey and black. Blind width max. 700 m / Blind height max. 3.00 m / Fabric weight max. 6.00 kg for one-piece louver packing on the left or right side. Blind width max. 5.00 m / Blind height max. 3.00 m / Fabric weight max. 6.00 kg for splitted or central louver package position (with one aluminium wand).

Motor gear 180° rotation and movement of the louvers via extruded ball chain (Ø4.5 x 6.0 mm). Plastic ball is on a polyester cord (Ø1.4 mm) in white, grey and black. Blind width max. 6.00 m / Blind height max. 5.00 m / Fabric weight max. 10.00 kg. **Tilt wand/Cord**

180° rotation of the louvers via tilt wand in transparent (PC - polycarbonate). Movement by pull cord (Ø2.1 mm) made of polyester in white, grey and black. Blind width max. 4.50 m / Blind height max. 5.00 m / Fabric weight max. 10.00 kg. **Motor operation**

The IQ3-Motor serves to move the louvers sideways and to tilt them. It is fitted with 4 functions: Open the hanging, close the hanging, tilt the louvers left and tilt the louvers right.

There are 2 additional functions (decor position and intermediate stop) and 3 speed settings. These functions are controlled by an operating button. The IQ3-Motor is optionally available with an RTS module for controlling a drive using a Somfy RTS radio transmitter. The motor can be installed using a variety of fasteners behind the track to the left, behind the track to the right, above the track to the left, or above the track to the right. Colour: powder-coated in white structure (RAL 9016), grey structure (RAL 7040), black structure (RAL 9005) and anthracite structure (RAL 7016).

Further information can be obtained from **Electrical planning IQ3-Motor • Louvre**

width: 127 mm (standard), 89 mm, 63.5 mm [other louver widths on request].

- **Louvre package** can be moved for window cleaning. Left, right, central or split louver package position as desired.
- Welded louver holder (PC - polycarbonate).
- Fully plastic weight plates (barium sulphate) and spacing chains (plastic clips on a polyester cord). Optional: Fully plastic weight plates to be welded in (without spacing chains).


Mounting

- **Top fix brackets** in white, grey and black. • **Face fix brackets** (adjustable) white, grey and black. Distances from the wall: 60-108 mm, 108-156 mm, 156-204 mm.
- **Recess profile** enables to mount the track in the ceiling cut-out. Powder-coated in white structure (RAL 9016), grey structure (RAL 7040), black structure (RAL 9005) and anthracite structure (RAL 7016). For measures, see section **Mounting dimensions** from page 46 to 61.

© 2025 Bentin®. All rights reserved. Errors and omissions excepted. Version: 23-10-2025

5

Production manuals: Vertical
Blinds+ Chaincord right - Louvre stacking

 BENTHIN

right

Press Shaft (B) into the deflection side end piece (E). Shaft terminates with end piece (1). Side operating side end piece (E) onto the Shaft and introduce the first cord end in marking (E).

Pull the last traveller (1) with the cord terminal (D) away from the traveller track (C). Place cord in the traveller track (2) and thread into the first chamber from the cord terminal (3). Introduce the second cord end into the second chamber (4) from the operating side end piece (E).

Place this cord in the traveller track (C) and thread it through the second chamber (3) from the cord terminal (3). Run this cord into chamber (2) from the deflection side end piece (E), then back through the chamber (3) of the deflection side. Fuse both cord ends and press together (4).

© 2005 Bentin. All rights reserved. Errors and omissions excepted. Version 08-02-2005

Electrical documents – Vertical blinds
Components

BENTHIN

Components – IQ3 motor

IQ3-100

The **IQ3 motor** is used to move and turn the louvers. It is equipped with a "mono function" so that control elements with 2 switching functions can be used. The IQ3 motor includes an optional RTS module for controlling a drive with an RTS radio transmitter from Somfy. Up to 16 transmitters can be programmed on one RTS module, allowing control as an individual system, in a group or even centrally.

- Rated voltage : 230-240 V AC 50 Hz
- Voltage : 180-264 V AC 47/63 Hz; 282 V DC
- range - input : 24 W P-out @ 230 V 50 Hz
- power : Stand by 0.3 W
- Protection class housing : IP 20
- Protection class : II
- Type of current : Low voltage
- Control voltage : 10 mA / control signal : 80 mcm on the sprocket
- Control current : max 5 mV/mm (E-stop)
- Torque : 10 mNm
- Travelling speed : 80 mcm on the sprocket
- End position detection : electronic through programming - Operating temperature : -10 °C
- Continuous load capacity : approx 10 °C duty cycle
- Weight : 550 g ± 53.5 x 27.6 x 40.0
- Dimensions : mm incl. end caps and cover

- X1 - Supply voltage X2 - Control signals (CLOSE/OPEN) X3 - Multifunctional interface

X1 Pin Function Pin X2 LHY 4 x 0.14 mm / VSTY 2 x 2 x 0.8

Function	Comment	Color	Wiring
L	230 V L - 24 V (max. 30 mA) WH (white)	80 (red)	Wiring
N	2 (blue) (brown) BN (brown)	86 (black)	Wiring
0	3 (green) +		
	4 (CLOSE button -) (N) (green) S	WH (white)	Control signal
	OPEN button (+) (N) (yellow)	YE (yellow)	Control signal

- Pin 3 Connection X2 to X3 - Ground as control signal no connection - Pol usage principle (optional)

© 2024 Benthin. All rights reserved. Errors and changes are excluded.

4

Version 21-03-2023

Vertical Blinds •
Typen V010, Kette/Schnur und
Vertikaljalousie •
Typen V010, Kette/Schnur
Verticals •
Typen V010, chaînette/ordon

A detailed technical diagram of a vertical blind assembly. It shows a horizontal headrail at the top with multiple vertical slats (louvers) hanging from it. A chaincord system is shown on the left side, with a control cord running down the side of the slats. Labels in German identify various components: 'Kette/Schnur' (chain/cord), 'Kette

DOCUMENTATION FOR ALL NEEDS

Benthin provides a comprehensive range of documentary material to make it easy for you to get started with a product. Detailed in-depth reference documents enable our customers to build strong product knowledge on all models.

Component Catalogue

Lists all components with information about article numbers, delivery times and order quantities.

Additional **exploded drawings** with item numbers help with ordering and provide an overview.

Data sheets and Electrical planning

Contain detailed information about each model. These may be used for general information purposes or when compiling order documents. They provide information for architects, as well as for manufacturers.

Production manual

A guide to assembling your blinds, with detailed step-by-step illustrations and descriptions.

Installation instructions

A helpful guide describing, in words and pictures, how to install, operate and care for vertical blinds.

Worksheet Program

A software tool to configure the models with bill of materials and pricing.

TYPEOVERVIEW VERTICAL BLINDS

[illegible]



Saxon Blinds Ltd

Unit A, 7 Magee Street
Northampton
NN1 4JT

T 01604 603111
E sales@saxonblinds.co.uk

www.saxonblinds.co.uk

BENTHIN®