





PLEATED BLINDS

Benthin pleated blinds offer a comprehensive range of products for all window screening needs.

With flexible control options and an extensive variety of model types, Benthin pleated blinds match with the latest interior design trends, producing a finished look that is contemporary and yet unobtrusive.

Rapid production with high degree of flexibility

The modular system provides the largest possible variety of model types, using only a small number of components.

Benthin pleated blinds have been optimised for automated production and are produced efficiently on Benthin production equipment.

Pleated blinds for modern interiors

With more than 100 models, our pleated blinds blend perfectly into contemporary home interiors.

Whether for vertical or tilt and turn windows, large or small glazed areas, roof windows, ceiling windows, conservatories or triangles, pentagons and hexagons, the pleated blind offers the perfect combination of decoration and sun protection.



FOR MODERN INTERIORS

Flexible adaptation

With six different control options, including handle-operated, cord lock, chain, spring, crank and motorised control as well as the six colours white, silver/grey, black, dark grey (DB 703), bronze and beige, the blinds provide the greatest possible flexibility when adapting our products to meet customer needs.

Appealing shapes and colours

Standard profiles in unobtrusive and elegant design and colour-coordinated components come together to create a pleated blind that is both appealing and symmetrical in appearance.

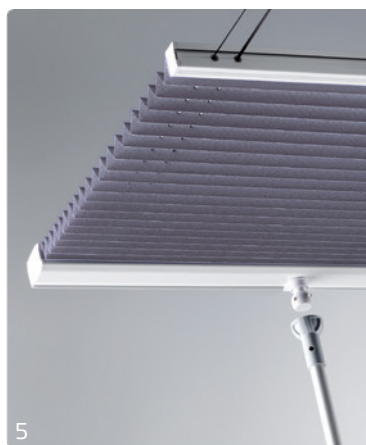
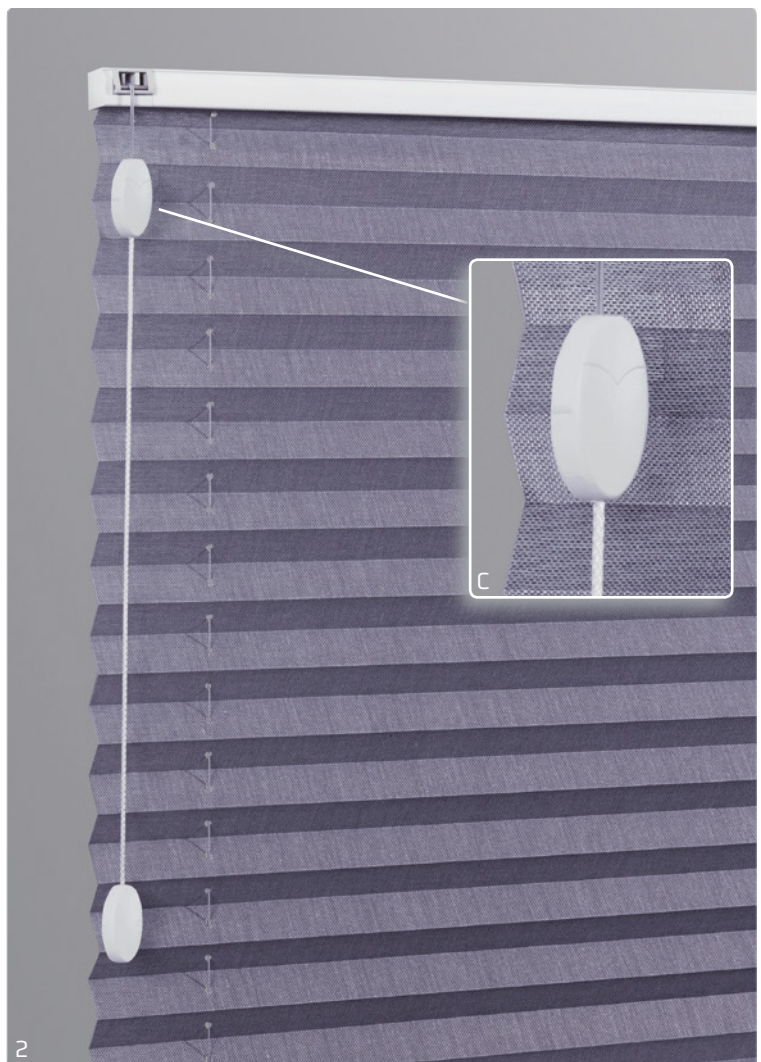
Easy installation

A standardised fixing system facilitating installation and measuring-up.

Free choice of fabric

An assortment of high-quality, functional and decorative fabrics can be put together to your liking.

Honeycomb pleated blind fabrics in 25 mm width can be processed just as easily as any fabric with the ideal fold width of 20 mm.



A WIDE RANGE OF CONTROLS

Handle-operated [1]

Simple operation of pre-tensioned pleated blinds with a discreet and stylish **handle** [A].

Or a silver **metal handle** [B] with individually coloured inserts as a premium design option.

Cord operation [2]

Integrated cord lock, without cord overtravel.

With a **child-safe tassel** [C].

This opens under load so that no loop can develop.

Chain operation [3]

Smooth, quiet and child safe chain drive [Ø4.5 x 6 mm] with a chain safety device.

An optimal control is achieved through suitable gearing.

Motor operation [4]

Opening and closing the blind with a 24 V motor operated using a switch or, for greater convenience, by remote control.

Crank operation [5]

Crank operation for ceiling or conservatory blinds with detachable and overload safe crank handle.

Spring drive [6]

A child-safety way to operate free-hanging systems. The window is kept free of cords or chains. The system is continuously adjustable.



7

COLOURS AND SHAPES

Colours

The elegant profiles are available in six colours. Powder coated in white, beige and dark grey (DB 703) or beautifully anodised in silver, bronze and black.

Visible plastic and metal components are colour-coordinated.

Standard profiles

All 22 mm profiles are only 16 mm in height.

A single head profile (27 x 35 mm) for chain, motor, crank operation and spring drive.

Not only does this help to ensure an unobtrusive appearance, it also enables excellent combination options of different controls and blind shapes and a reduction in package height compared to similar systems.

Slope Units [7]

Slope units can only be operated with one cord lock.

The swivelling **slope cord lock** [D] works with any angle and ensures that the operating cord hangs vertically.

Controlled from the front, it makes operation simple and convenient.



SMART DETAILS

Spring drive without visible cords [1]

Spring drive operation can be manufactured with only a few additional components. Absolute child safety is guaranteed without a control cord.

When used in conjunction with a 25 mm honeycomb fabric, pleated blinds can be produced without any visible cord holes in the fabric.

Night and day models [3]

A combination of two individual fabrics within one pleated blind, each of which can be operated and adjusted separately.



Handle operated blinds with a locking function.

The moveable profiles of the handle operated pleated blinds lock easily onto the fixing plates. Optionally with proven spring technology or with magnet.

The 16 mm high and low-deflection profile completely covers the fixing plates, thereby reducing the light gap to an absolute minimum.

Metal handle [2]

The plastic inserts in the premium metal handle cover the fasteners and can be colour-matched.

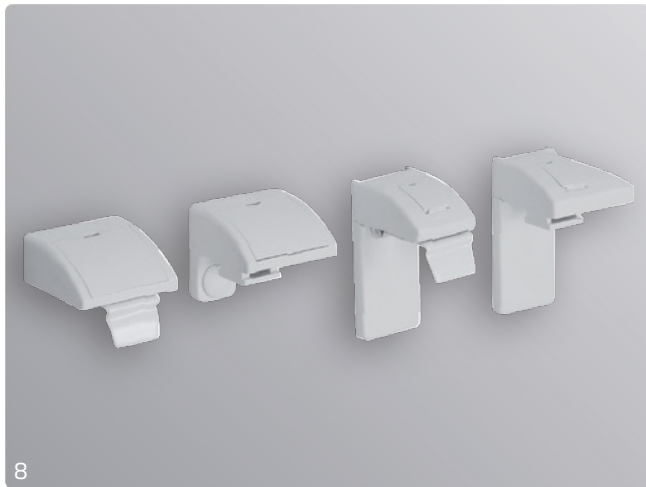
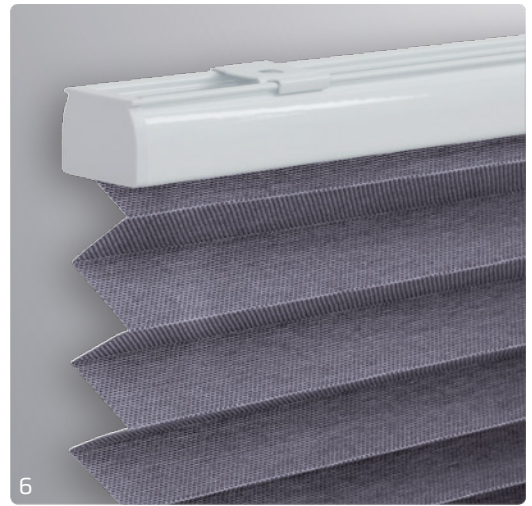
Cord guiding [4]

A side-tensioned cord guiding provides an unobtrusive solution for blinds hung in parallel to a swivel/tilt window or door.

An elegant solution for roof windows [5]

With the addition of a cassette profile and appropriate end caps, standard handle-operated blinds can be fitted in all common roof windows.

The cassette profiles make installation quick and easy.



SYSTEMATIC INSTALLATION

The installation options, whether in or on the glazing bead, on the casement or in or in front of the embrasure or directly on the glass, are not only varied and easy, but will fit in perfectly whatever the setting.

Clip mounting [6]

The exceptionally flat **mounting clip** enables the profile to be mounted less than 1 mm away from the ceiling. The reduction of chinks of light to an absolute minimum and the almost invisible clip ensure an elegant appearance.

Simple mounting on the glazing bead [7]

The glazing bead holders enable the blinds to be mounted perfectly on the glazing bead. This method positions the blind very close to the window while maintaining adequate air circulation.

The straightforward measurement of the glazing bead edge facilitates measuring-up and makes installation quick and easy.

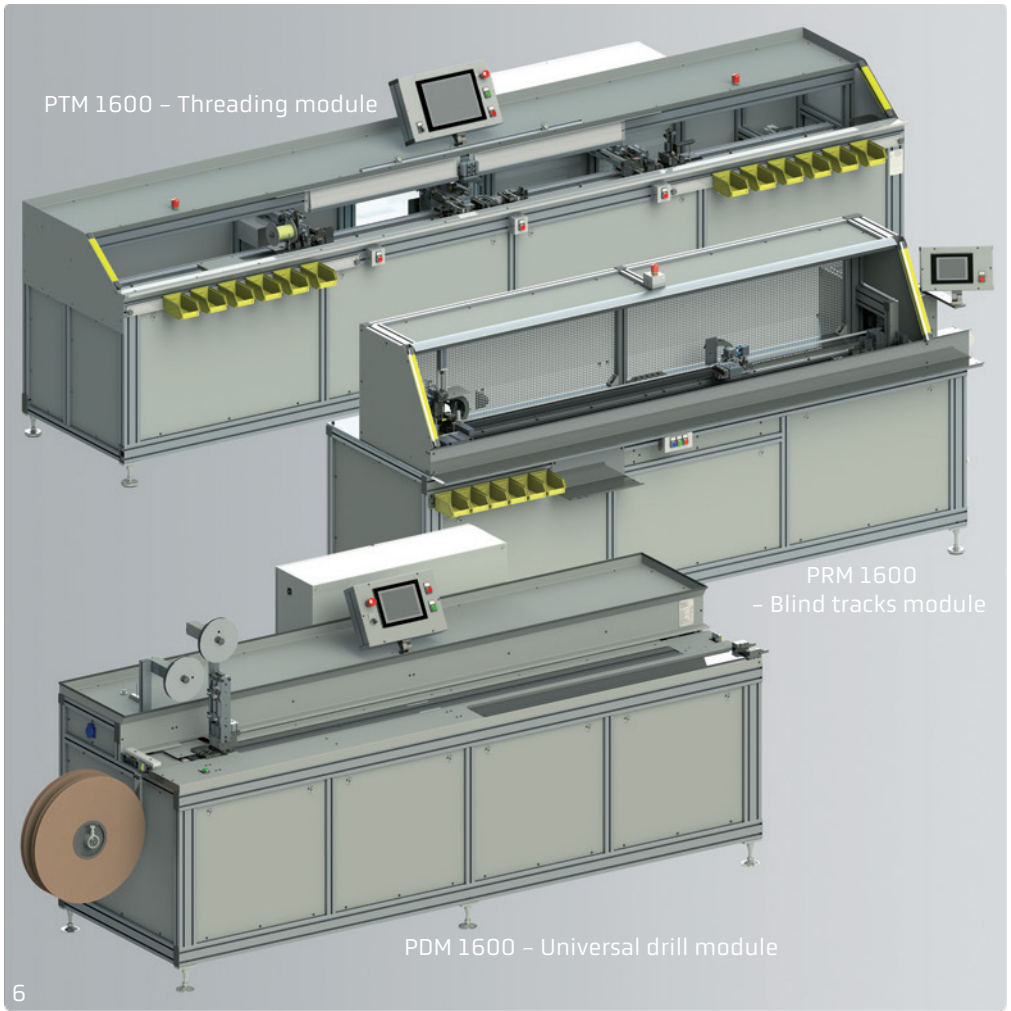
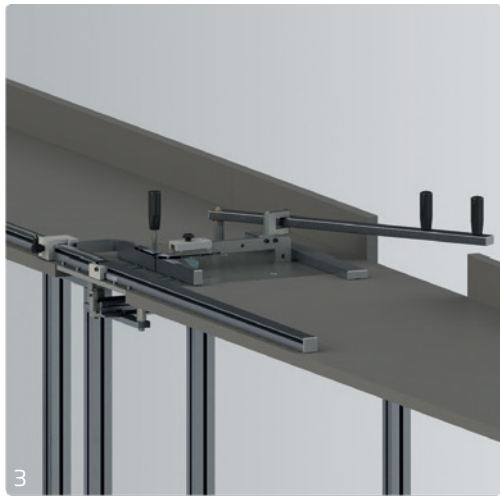
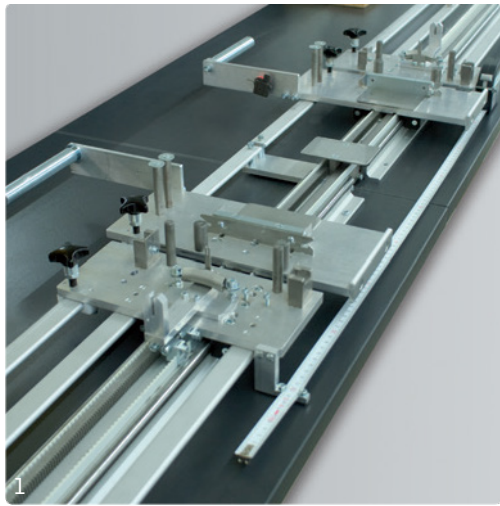
Standardised design [8]

All the fixings have the same design. Different installation options can be easily combined.

Installation without drilling

The **casement carrier FFT** [9] is a discreet and simple clamp fastener for type P1615 without damaging the window seal.

The **legitimate adhesive profile** [10] can be fitted directly on the glass pane. The holders can be fitted accurately to the glazing bead angle.



CUSTOMIZED PRODUCTION

Innovative production equipment can be scaled to suit any production size.

A wide range of manually operated and semi-automatic equipment is also available for the production of smaller batch sizes.

Pleated blind assembly device **PMV** [1]. Complete assembly of various types of standard blinds and operating handle units. Enables the blind dimensions and cord lengths to be set precisely. No additional functional testing is required.

Pleated fabric saw **PFS 650** [2]. A variable speed facility ensures optimum cutting and sealing of pleated fabrics. For fold depth up to 64 mm and stack heights up to 100 mm.

Fabric cutter **MPC 150/MPC 50** [3]. Manual width cutting for pleated and honeycomb fabrics with replaceable trapezoid blade. Fold depth up to 25 mm/50 mm and stack heights up to 150 mm/100 mm.

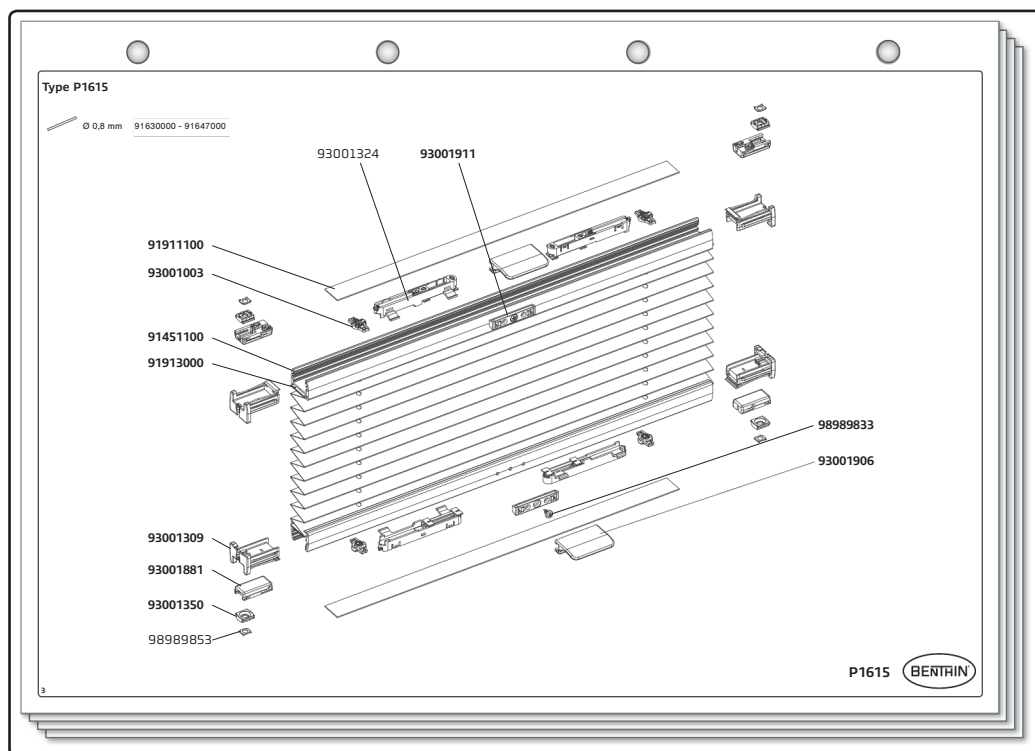
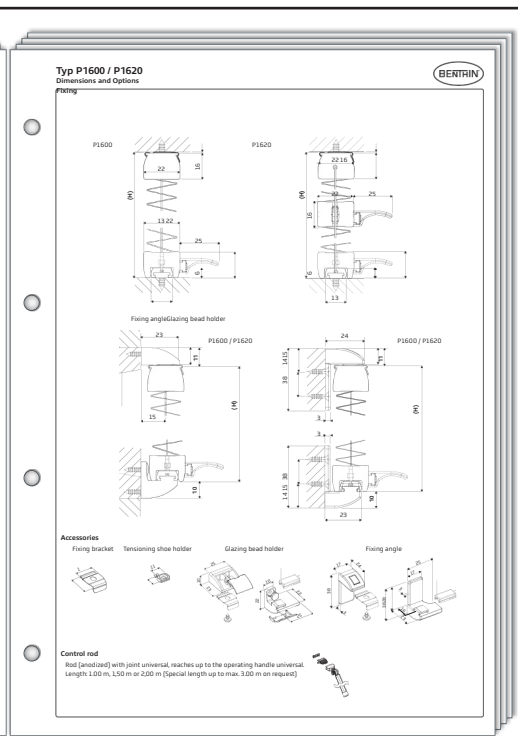
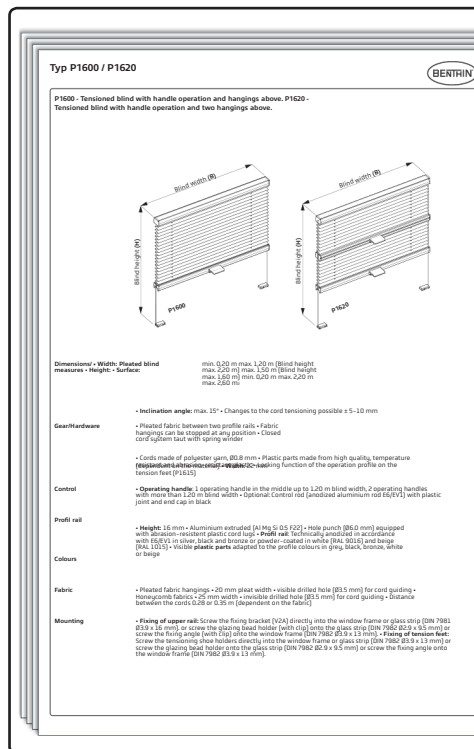
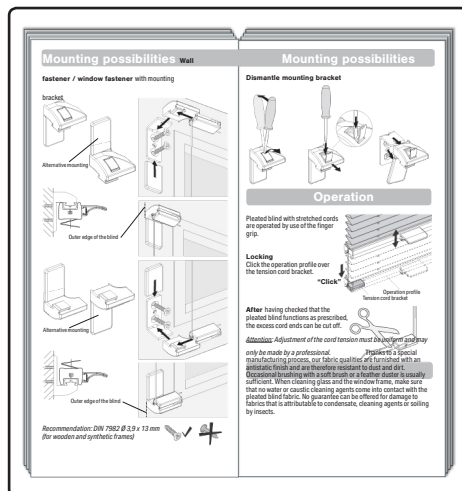
Fabric drill **PDM 100** [4]. Air-cooled fabric drilling up to 32 mm fold depth and a stack height of 40 mm [75 mm].

Fabric drill **PDM 850** [5]. Air-cooled fabric drilling up to 64 mm fold depth and a stack height of 80 mm. Up to 150 mm with drilling from both sides.

Handle operated blinds can be produced automatically using the **pleated blind assembly machine PMA** [6].

It consists of three modules, a fabric processing unit (universal drill module) a blinds track module and a threading unit that carries out the final assembly.

Pleated Blinds • Plisseé • Plissés				22 mm	BENTHIN
Profiles • Profile • Profils					P22 10
Execution	Article No.	Material	Delivery Time		
Execution	Article No.	Material	Delivery Time		
Tension profile • Spannsprofil • Profila tendeur / 18 x 22 mm					
anodized silver • eloxiert Silber • anodisé argenté	5 m 91403100	150 m	A		
white • weiß • blanc	5 m 91403101	150 m	A		
anodized black • eloxiert schwarz • anodisé noir	5 m 91403102	150 m	B		
anodized bronze • eloxiert Bronze • anodisé bronze	5 m 91403103	150 m	B		
beige • beige • beige	5 m 91403104	150 m	B		
uncoated • unbeschichtet • non revêtu	5 m 91403105	150 m	C		
DB 7033 dark grey • dunkelgrau • gris foncé	5 m 91403107	150 m	C		
Tension profile plus • Spannsprofil Plus • Profila tendeur plus / 20 x 22 mm					
anodized silver • eloxiert Silber • anodisé argenté	5 m 91403201	150 m	A		
white • weiß • blanc	5 m 91403202	150 m	A		
anodized black • eloxiert schwarz • anodisé noir	5 m 91403203	150 m	B		
anodized bronze • eloxiert Bronze • anodisé bronze	5 m 91403204	150 m	B		
beige • beige • beige	5 m 91403205	150 m	B		
uncoated • unbeschichtet • non revêtu	5 m 91403206	150 m	C		
DB 7033 dark grey • dunkelgrau • gris foncé	5 m 91403207	150 m	C		
Profile • Standardprofil • Profila standard / 16 x 22 mm					
anodized silver • eloxiert Silber • anodisé argenté	5 m 91407200	150 m	A		
white • weiß • blanc	5 m 91407201	150 m	A		
anodized black • eloxiert schwarz • anodisé noir	5 m 91407202	150 m	B		
anodized bronze • eloxiert Bronze • anodisé bronze	5 m 91407203	150 m	B		
beige • beige • beige	5 m 91407204	150 m	B		
uncoated • unbeschichtet • non revêtu	5 m 91407205	150 m	C		
DB 7033 dark grey • dunkelgrau • gris foncé	5 m 91407207	150 m	C		
Profile • Standardprofil • Profila standard / 16 x 22 mm					
anodized silver • eloxiert Silber • anodisé argenté	5 m 91407200	150 m	A		
white • weiß • blanc	5 m 91407201	150 m	A		
anodized black • eloxiert schwarz • anodisé noir	5 m 91407202	150 m	B		
anodized bronze • eloxiert Bronze • anodisé bronze	5 m 91407203	150 m	B		
beige • beige • beige	5 m 91407204	150 m	B		
uncoated • unbeschichtet • non revêtu	5 m 91407205	150 m	C		
DB 7033 dark grey • dunkelgrau • gris foncé	5 m 91407207	150 m	C		
Profile • Standardprofil • Profila standard / 16 x 22 mm					
anodized silver • eloxiert Silber • anodisé argenté	5 m 91922100	150 m	A		
white • weiß • blanc	5 m 91922101	150 m	A		
anodized black • eloxiert schwarz • anodisé noir	5 m 91922102	150 m	B		
anodized bronze • eloxiert Bronze • anodisé bronze	5 m 91922103	150 m	B		
beige • beige • beige	5 m 91922104	150 m	B		
uncoated • unbeschichtet • non revêtu	5 m 91922105	150 m	C		
DB 7033 dark grey • dunkelgrau • gris foncé	5 m 91922107	150 m	C		
Profile • Standardprofil • Profila standard / 16 x 22 mm					
anodized silver • eloxiert Silber • anodisé argenté	5 m 91922100	150 m	A		
white • weiß • blanc	5 m 91922101	150 m	A		
anodized black • eloxiert schwarz • anodisé noir	5 m 91922102	150 m	B		
anodized bronze • eloxiert Bronze • anodisé bronze	5 m 91922103	150 m	B		
beige • beige • beige	5 m 91922104	150 m	B		
uncoated • unbeschichtet • non revêtu	5 m 91922105	150 m	C		
DB 7033 dark grey • dunkelgrau • gris foncé	5 m 91922107	150 m	C		



DOCUMENTATION FOR ALL NEEDS

Benthin provides comprehensive documentation for all products, making it easier for you to get started with a product. Detailed reference documents help you to build up in-depth product knowledge.

Component catalogue

Lists all components with information such as article numbers, delivery times and minimum order quantities.

Assembly

- Threading diagrams
- Exploded drawings
- A guide to assembling your blinds.

Data sheets

Provide detailed information about each model. These may be used for general information purposes or when compiling order documents. They provide information for architects, as well as for manufacturers.

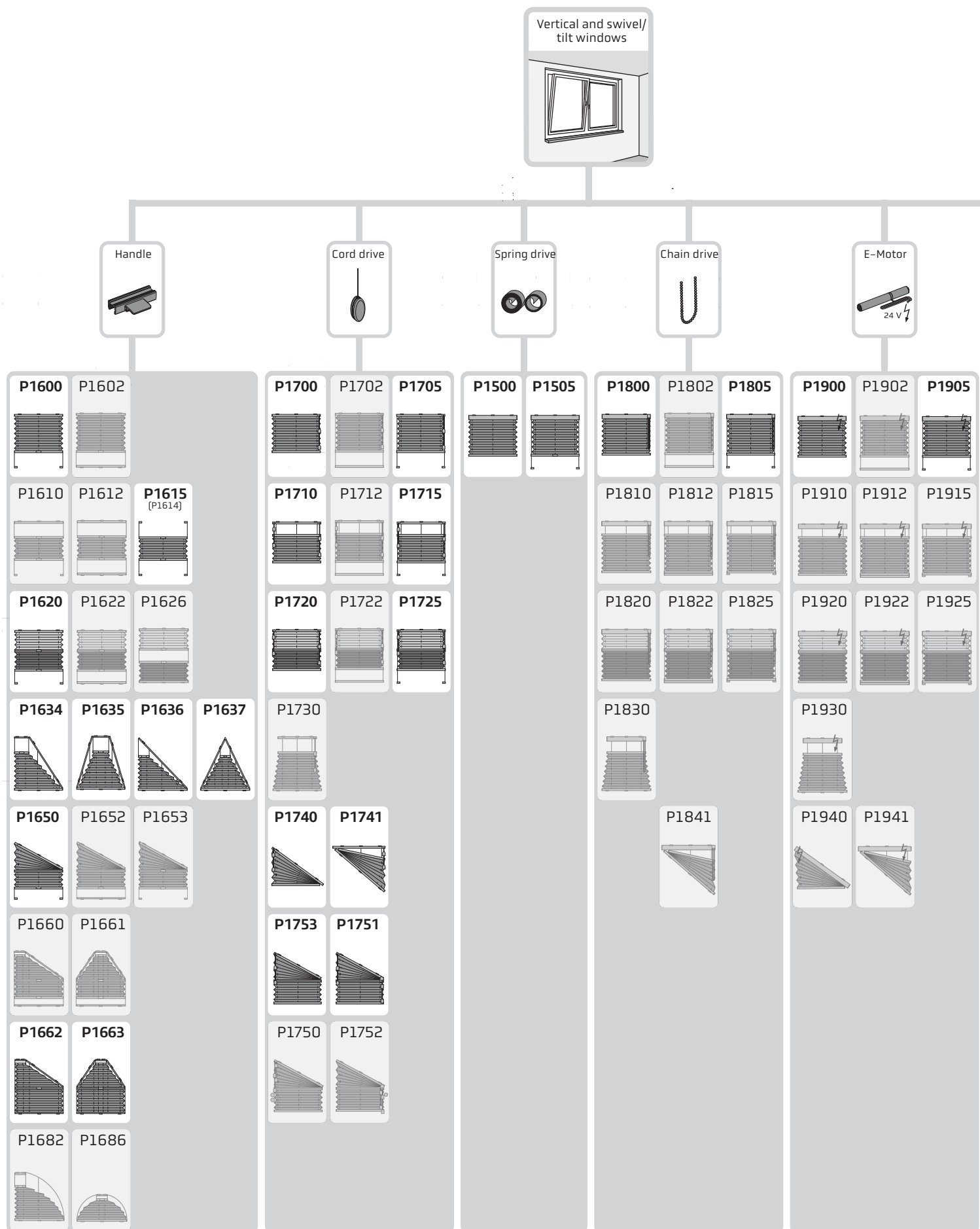
Fixing instructions

A helpful guide describing in words and pictures, how to install, operate and maintain your pleated blind system.

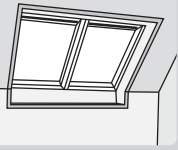
Worksheet program

A software tool to configure the models with bill of materials and pricing.

TYPE OVERVIEW PLEATED BLINDS



Roof windows



fixed

Handle



P1001



P1036



P1037



P1043



P1044



P1082



P1083



P1086



P2601



P2603



P2611



P2613



P2616



P2621



P2623



P2627



P2600



P2602



P2610



P2612



P2615



P2620



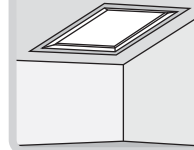
P2622



P2626



Ceiling windows and conservatory



Handle



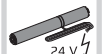
Cord drive



Crank



E-Motor



P3600



P3700



P3800



P3802



P3900



P3902



P3630



P3830



P3930



P3634



P3635



P3834



P3835



P3934



P3935



P3636



P3637



P3836



P3837



P3936



P3937



P3650



P3660



P3661



P3662



P3663



P3862



P3863



P3962



P3963





Saxon Blinds Ltd
Unit A, 7 Magee Street
Northampton
NN1 4JT

T +44 1604 603111

sales@saxonblinds.co.uk
www.saxonblinds.co.uk

