

Roller Blinds

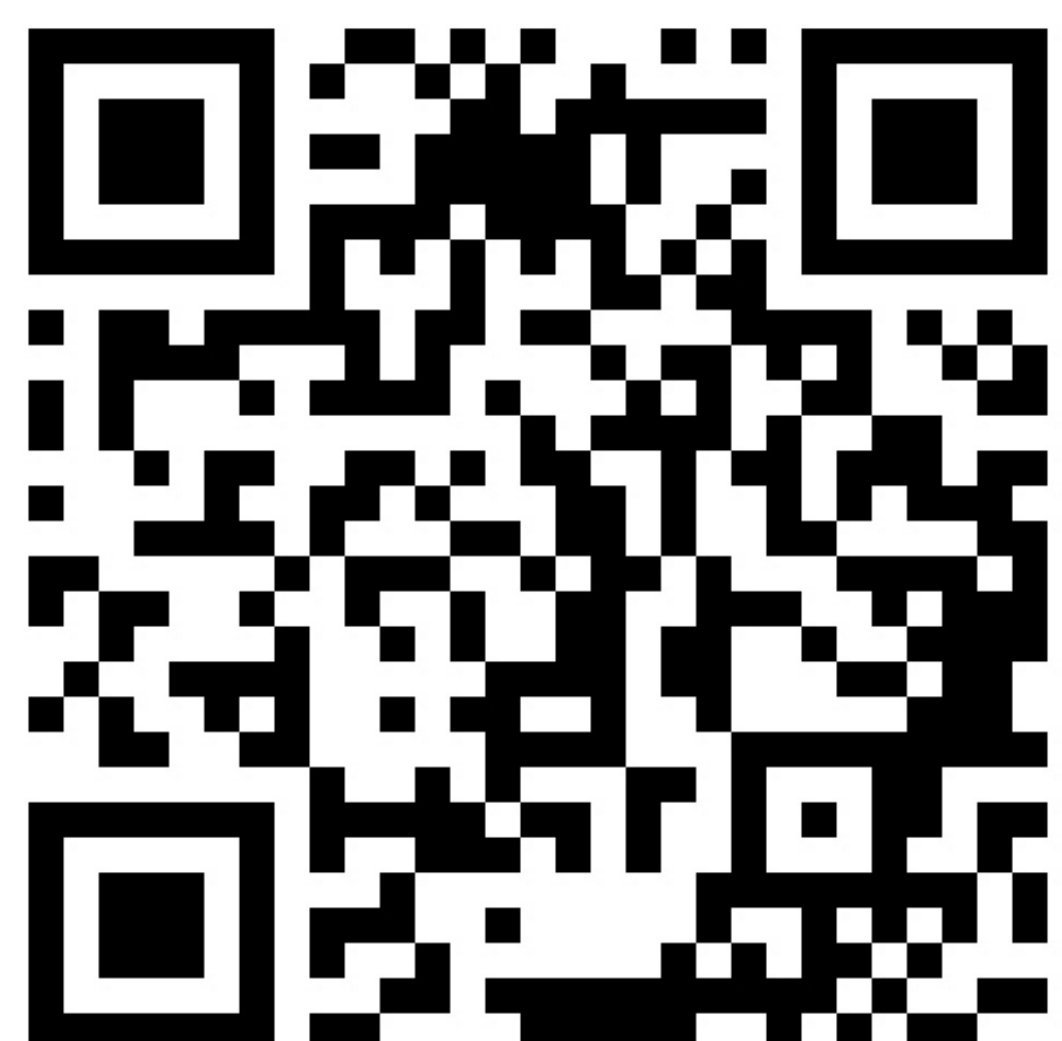
Chain



Gear



Electric



Overview

We manufacture our Heavy Duty Roller Blind systems from high grade extruded aluminium tubing featuring 40, 45, 52, 65 & 75mm systems to suit widths up to 5mtrs or alternatively can be coupled up to 8mtrs. In addition we offer the 44mm Evolve Zero 0% deflection system, incorporating Zoomtech Technology the system offers zero deflection up to an impressive 5mtrs wide, making it a perfect solution for large width Roller Blinds that are to be installed in restricted spaces.

We have a wide range of flame retardant contract fabrics available, including a variety of high performance Screen, Blackout and Dim-out Fabrics with many Sustainable options also available.

Our Commercial Roller Blinds can be manually operated via metal nickel chain or 4:1 ratio gear box. They can also be motorised, with a range of Somfy Motors available, including Hardwired WT, 230V RTS, Battery RTS and Zigbee smart home automation.

We have a range of optional extras available including Blindspace Concealment Boxes, full Fascia Cassette Boxes and open Fascia Cassette Boxes. These come in a range of standard colours \ finishes or can be powder coated to suit, with a host of bespoke RAL options available.





Saxon Blinds Ltd

Specifications

40mm System

Drive End Features:

- Tensile spring loading mechanism manufactured in stainless steel.
- Operated with plastic or nickel N° 10 chain
- Internal mechanisms are coated with tailored lubricant ensuring smooth and quiet operation.
- 3 pin secure fitting clicks securely into bracket.
- Floating outer cover enables chain to be fitted without dismantling the clutch

Bracket Features:

- Load Capacity 2.75Kg
- Powder coated for rust resistance.
- Plastic cover caps available to finish blinds when fitted outside the recess.
- Extended base bracket aids installation while keeping slim profile shape.
- Extension brackets available – projection dimension 86mm
- Dual roller bracket available enabling two roller blinds to be installed on the same bracket.

Free End:

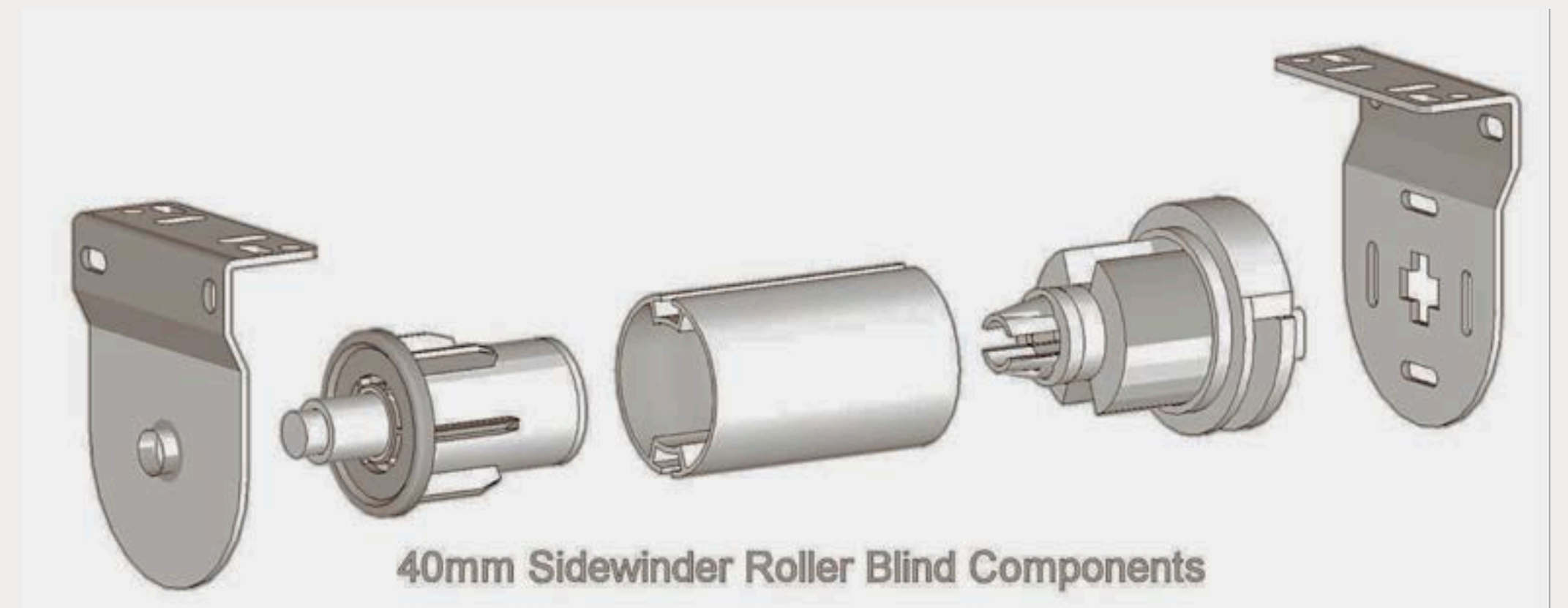
- Spring loaded plunge pin design offers flexibility when installing blinds.

Roller Tube:

- High Quality extruded aluminium 40mm double slot tubing with keyed fitting of the drive and free ends

Optional Control Options:

- Somfy Sonesse 30 RTS Rechargeable Battery Motor (Remote Control and App)
- Somfy Sonesse Zigbee 30 Rechargeable Battery Motor (Remote Control and App)



45mm System

Drive End Features:

- Tensile spring loading mechanism manufactured in stainless steel.
- Operated with nickel N° 10 chain
- Internal mechanisms are coated with tailored lubricant ensuring smooth and quiet operation.
- 3 pin secure fitting clicks securely into bracket.
- Floating outer cover enables chain to be fitted without dismantling the clutch

Bracket Features:

- Load Capacity 4.0Kg
- Powder coated for rust resistance.
- Plastic cover caps available to finish blinds when fitted outside the recess.
- Extended base bracket aids installation while keeping slim profile shape.
- Dual roller bracket available enabling two roller blinds to be installed on the same bracket.

Free End:

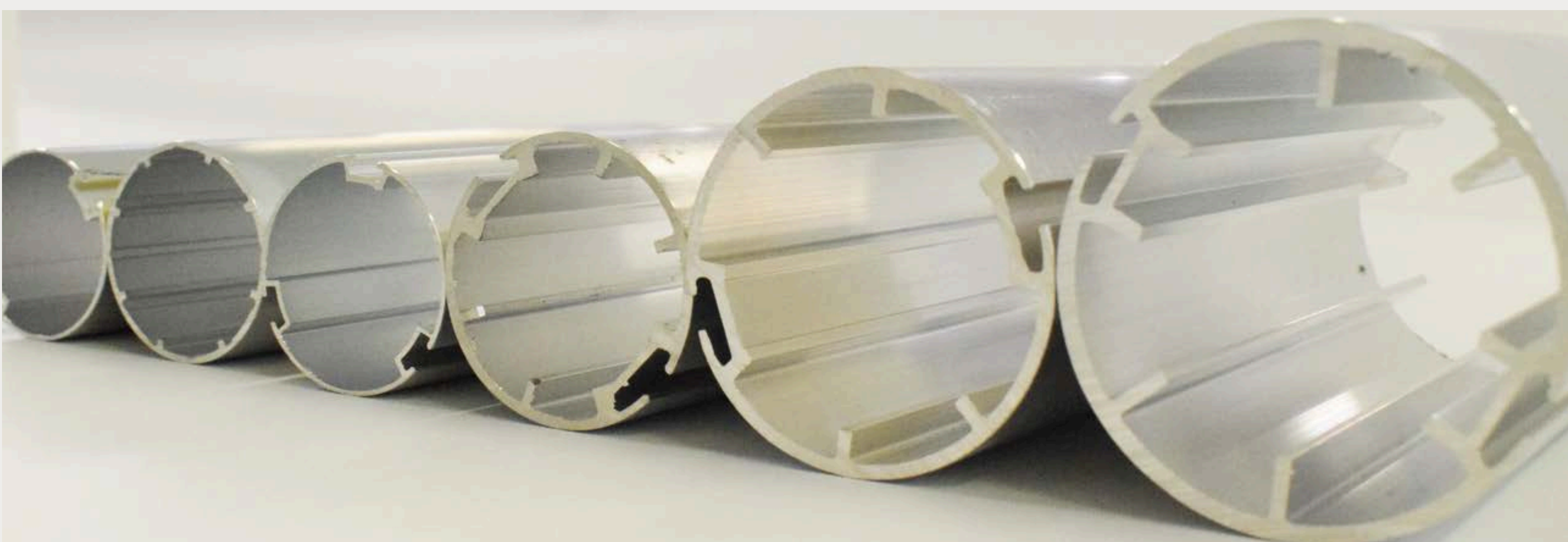
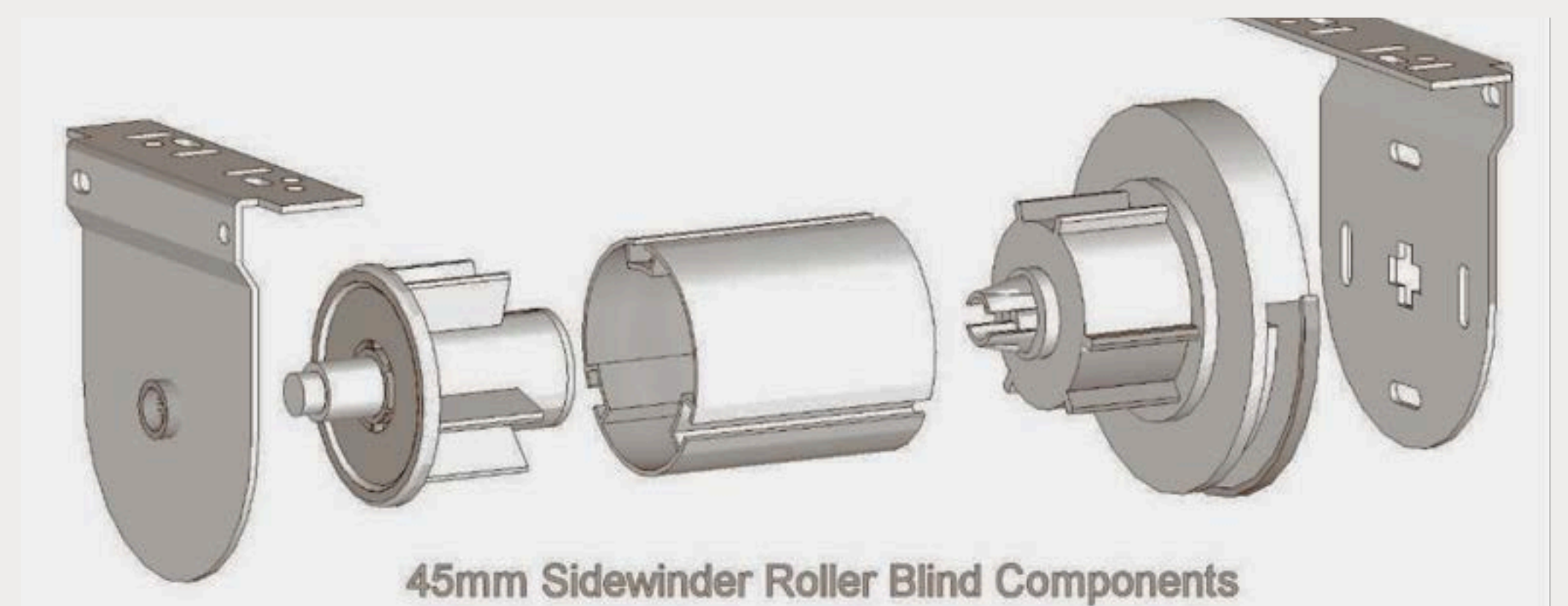
- Spring loaded plunge pin design offers flexibility when installing blinds.

Roller Tube:

- High Quality extruded aluminium 45mm triple slot tubing.

Optional Control Options:

- Somfy Sonesse 30 RTS Rechargeable Battery Motor (Remote Control and App)
- Somfy Sonesse Zigbee 30 Rechargeable Battery Motor (Remote Control and App)
- Geiger 4:1 Ratio Gearbox Operation with Crank Winding Handle





Saxon Blinds Ltd

Specifications

52mm System

Drive End Features:

- A smooth-running chain drive can be operated with nickel N• 10 chain
- Internal mechanisms are coated with tailored lubricant ensuring smooth and quiet operation.

Bracket Features:

- Load Capacity 12Kg
- Heavy-duty 3mm thick steel, plated for rust resistance.
- Plastic cover caps available to finish blinds when fitted outside the recess.

Free End:

- A secure and positively locked pin end for easy installation of the blind or the
- option of coupling up to three blinds from one drive

Roller Tube:

- High Quality 52mm internal webbed extruded aluminium dual slot tubing

Optional Control Options:

- Somfy Sonesse 40 RTS Rechargeable Battery Motor (Remote Control and App)
- Somfy Sonesse 40 RTS 230v Mains Powered Motor (Remote Control and App)
- Somfy Sonesse 40 230v Hardwired Mains Powered Motor (Wall Switch or AV)
- Somfy Sonesse 40 Zigbee 230v Mains Powered Motor (Remoter Control and App)
- Geiger 4:1 Ratio Gearbox Operation with Crank Winding Handle)



44mm System

Drive End Features:

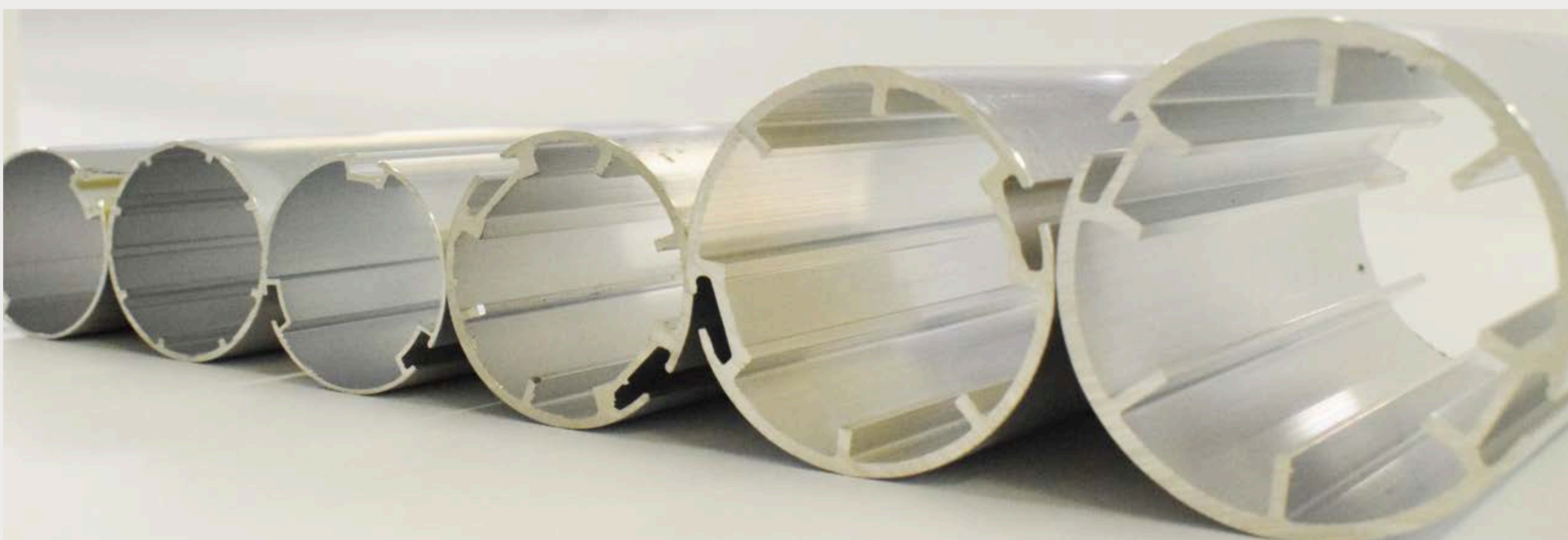
- A smooth-running chain drive operated with No.10 Metal Nickel Chain
- Internal mechanisms are coated with tailored lubricant ensuring smooth and quiet operation
- Free End:
- A secure and positively locked pin end for easy installation of the blind or the option of coupling up to 3 blinds from one drive.

Bracket features:

- Load capacity 4kg
- Heavy-Duty 3mm thick steel, plated for rust resistance
- Plastic cover caps are available to finish blinds when fitted outside the recess
- Roller Tube:
- High quality 44mm internal webbed extruded aluminium tubing.

Optional Control Options:

- Somfy Sonesse 40 RTS Rechargeable Battery Motor (Remote Control and APP)
- Somfy Sonesse 40 RTS 230v Mains Powered Motor (Remote Control and APP)
- Somfy Sonesse 40 230v Hardwired Mains Powered Motor (Wall Switch or AV)
- Somfy Sonesse 40 Zigbee 230v Mains Powered Motor (Remoter Control and APP)
- Geiger 4:1 Ratio Gearbox Operation with Crank Winding Handle)





Saxon Blinds Ltd

Specifications



65mm System

Drive End Features:

- A smooth-running chain drive can be operated with nickel N° 10 chain
- Internal mechanisms are coated with tailored lubricant ensuring smooth and quiet operation.

Bracket Features:

- Load Capacity 12.0Kg
- Heavy-duty 3mm thick steel, plated for rust resistance.
- Plastic cover caps available to finish blinds when fitted outside the recess.

Free End:

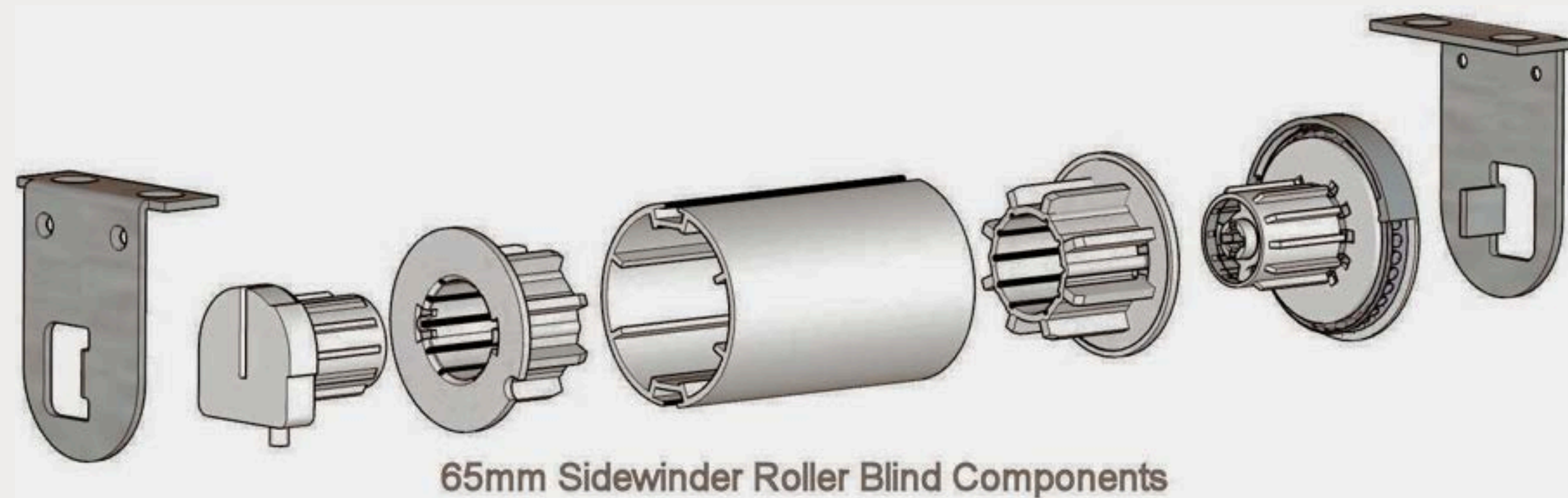
- A secure and positively locked pin end for easy installation of the blind or the option of coupling up to three blinds from one drive

Roller Tube:

- High Quality 65mm internal webbed extruded aluminium dual slot tubing

Optional Control Options:

- Somfy Sonesse 50 RTS 230v Mains Powered Motor (Remote Control and App)
- Somfy Sonesse 50 Hardwired Mais Powered Motor (Wall Switch or AV)
- Geiger 4:1 Ratio Gearbox Operation with Crank Winding Handle



75mm System

Drive End Features:

- The 1:4 geared clutch ensure that this system can cope with up to 12kg of fabric.
- Operated with nickel N° 10 chain
- Internal mechanisms are coated with tailored lubricant ensuring smooth and quiet operation.
- 3 pin secure fitting clicks securely into bracket

Bracket Features:

- Universal Bracket enabling blind to be fitted for under or over hand operation
- Load Capacity 12.0Kg
- Plated for rust resistance
- Plastic cover caps available to finish blinds when fitted outside the recess

Free End:

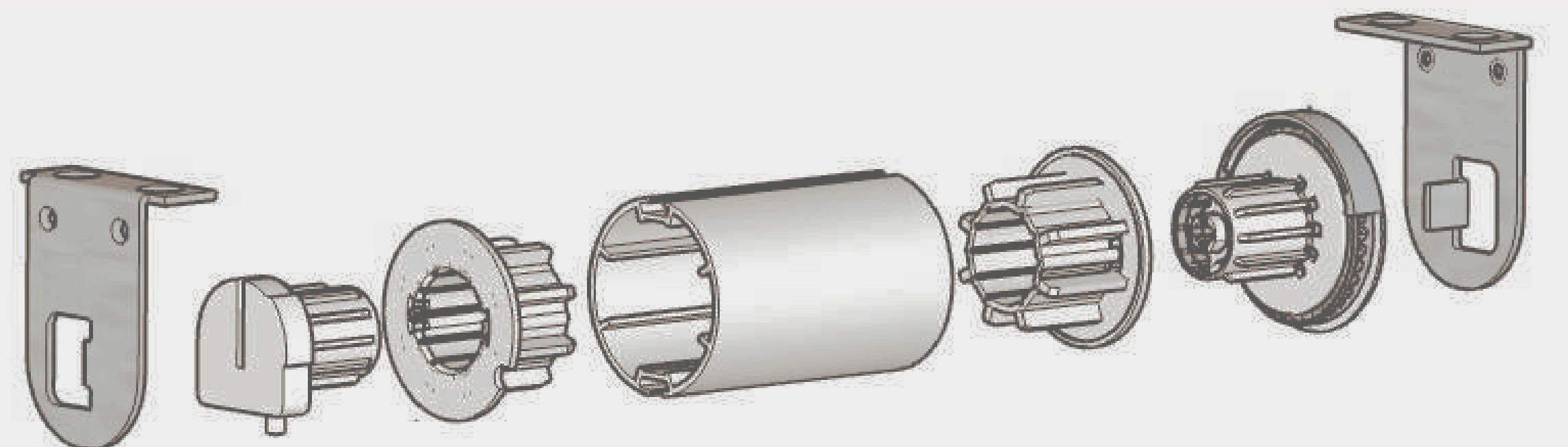
- Spring loaded plunge design offers flexibility and positive locking into bracket

Roller Tube:

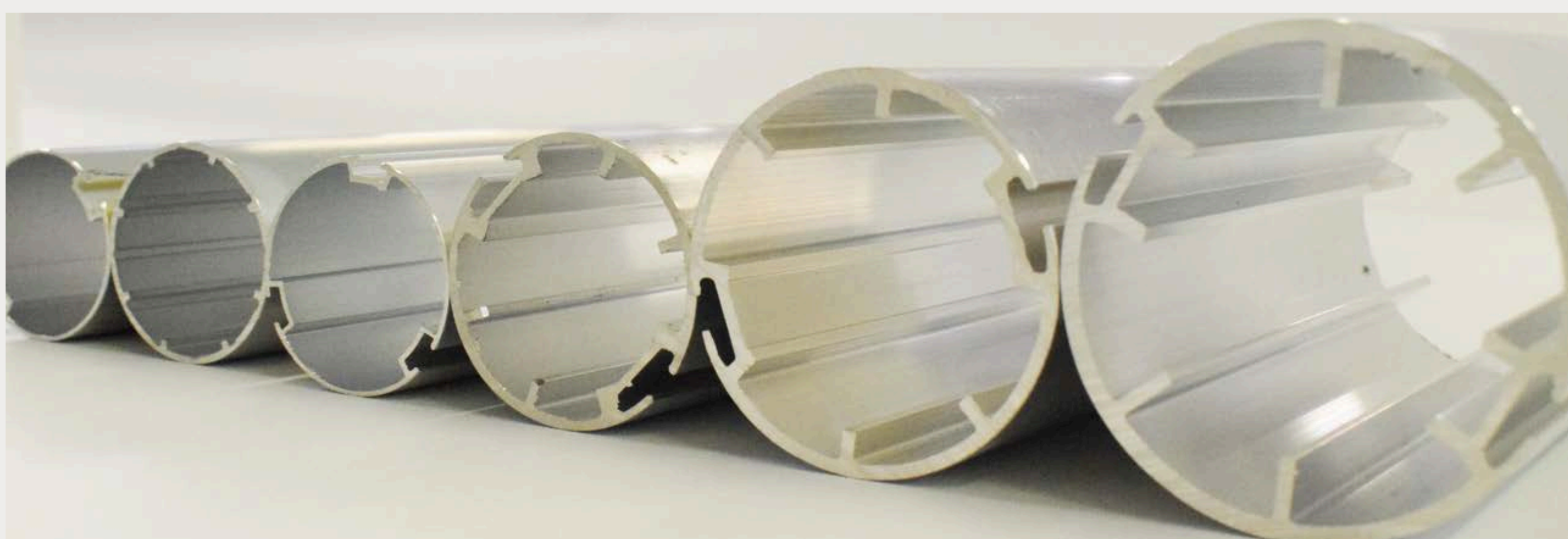
- High Quality 75mm internal webbed extruded aluminium single slot tubing

Optional Control Options:

- Somfy Sonesse 50 RTS 230v Mains Powered Motor (Remote Control and App)
- Somfy Sonesse 50 Hardwired Mais Powered Motor (Wall Switch or AV)
- Geiger 4:1 Ratio Gearbox Operation with Crank Winding Handle



75mm Sidewinder Roller Blind Components





Gear Operated Roller Blinds

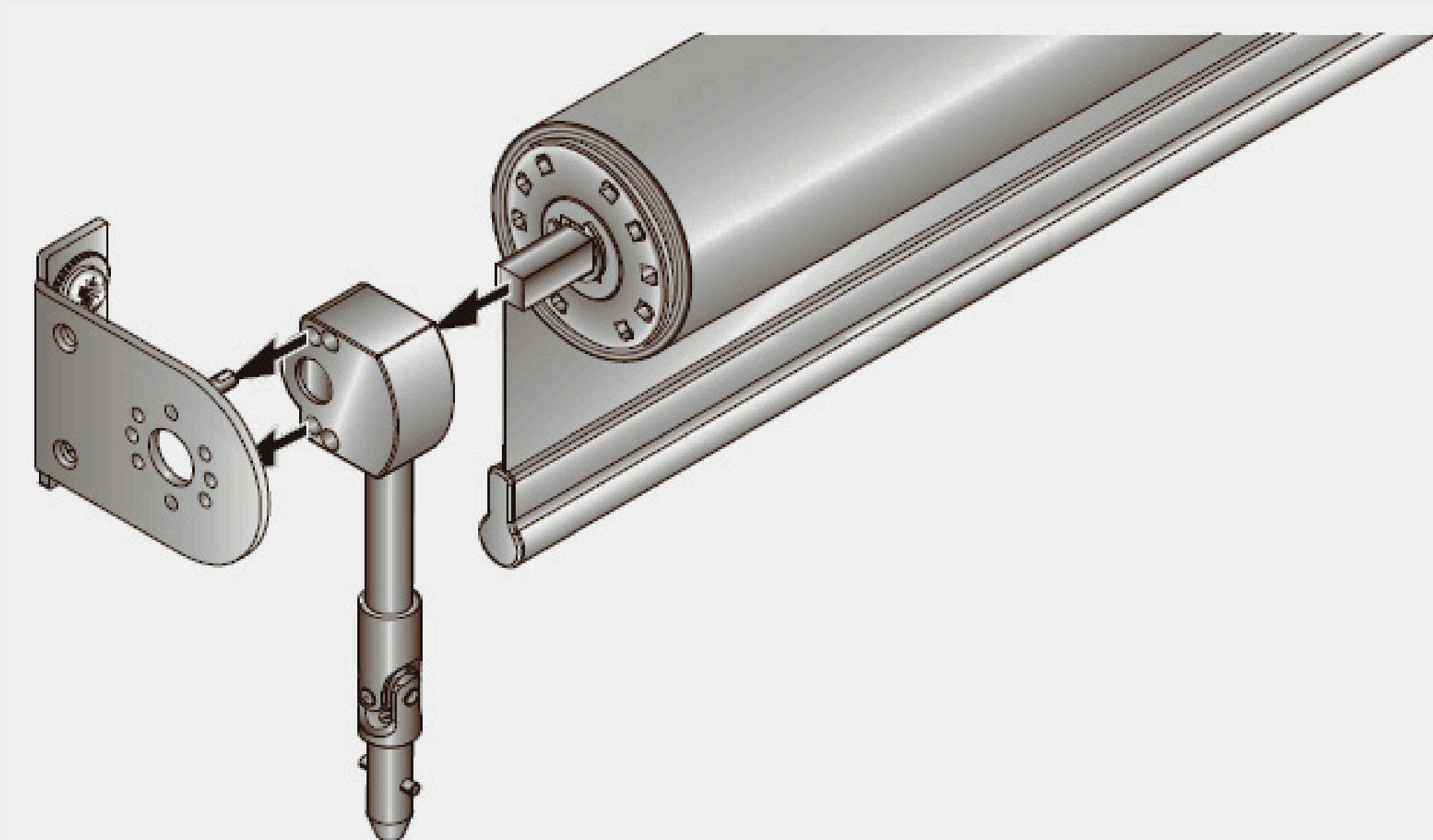


Our range of exceptionally robust Gear Operated Roller Blinds are available with an integral 4:1 or 2.8:1 ratio gear box.

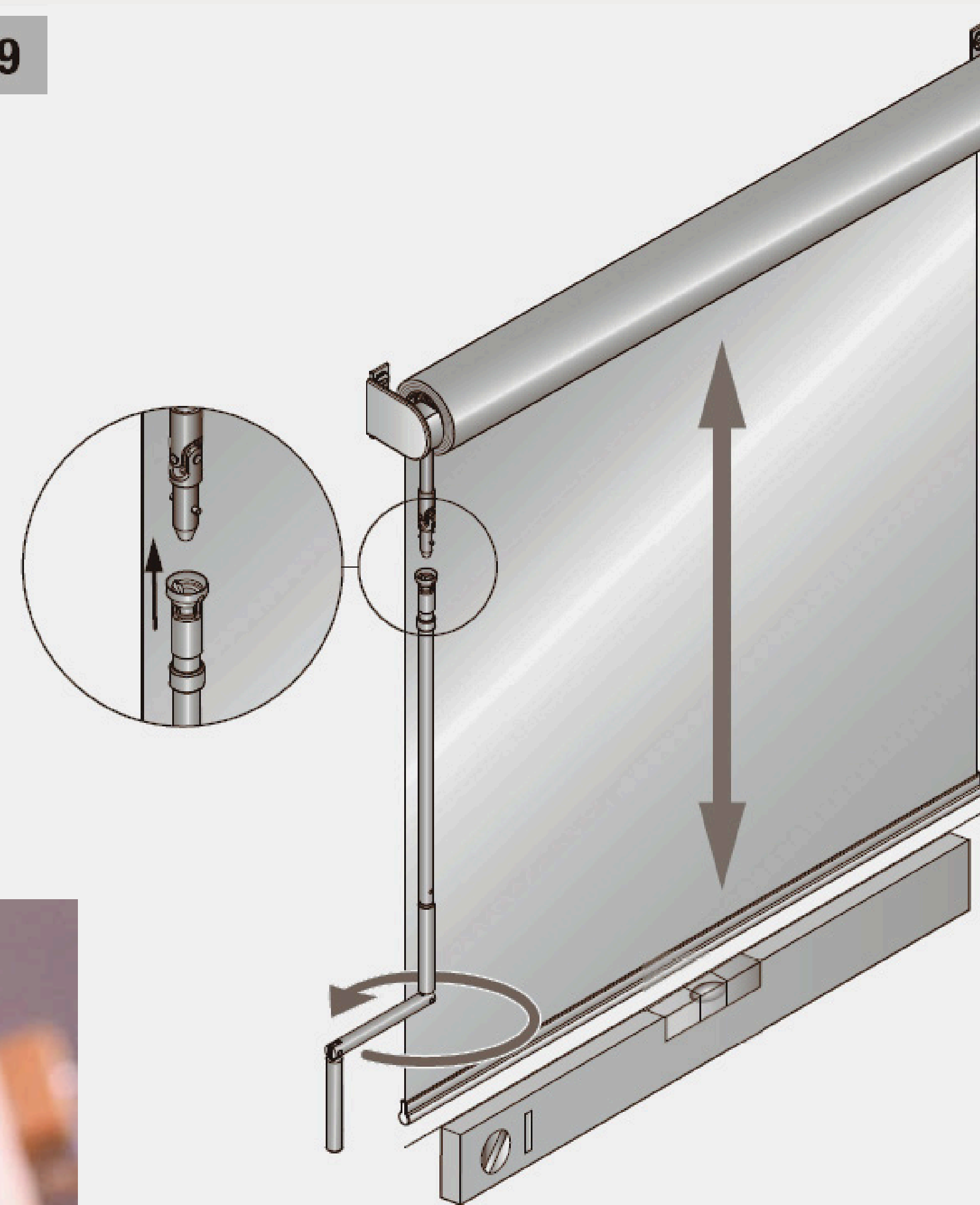
Each system is easily controlled by a fixed or detachable crank winding handle. The detachable crank winding handle restricts the operation of the blinds to designated users, making them ideal for schools or buildings where the general public have access. Gear Operated Roller Blinds are an ideal solution for inaccessible high level windows as the operating point can be lowered to a convenient position.

The Heavy Duty Roller Blind and gearbox can be enclosed within an aluminium cassette box or full aluminium fascia, which provides a clean and stylish look, whilst offering the added benefit of reduced light bleed from above the blind. All cassette boxes and full fascia's are powder-coated white as standard but we do also offer a range of bespoke powder-coated RAL finishes.

Our Heavy Duty Gear Operated Roller Blinds eliminate the need for any control chains or electrical installation. They are also considered "safe by design" in accordance with BS EN13120 making it a perfect product for schools and nurseries.



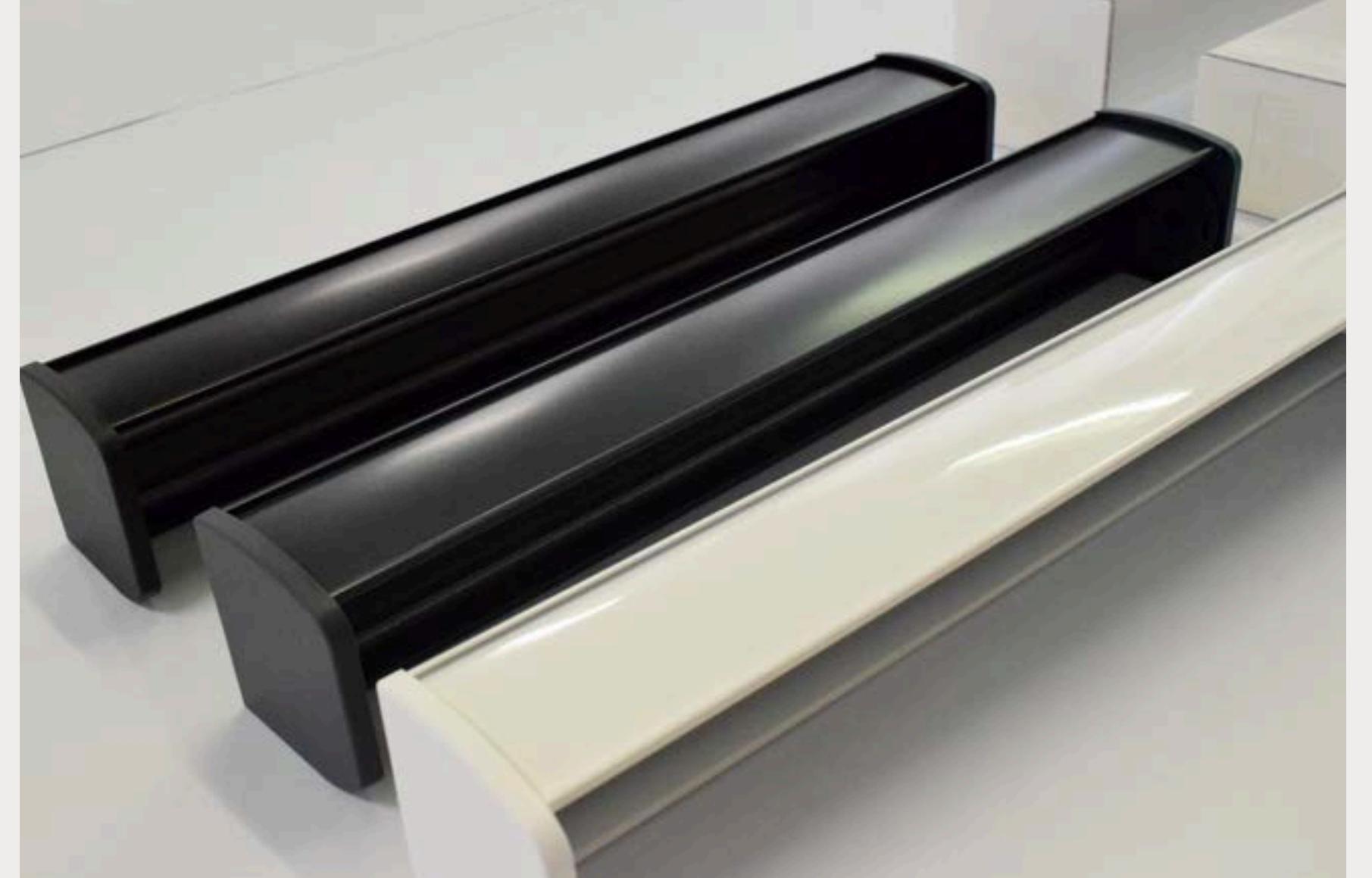
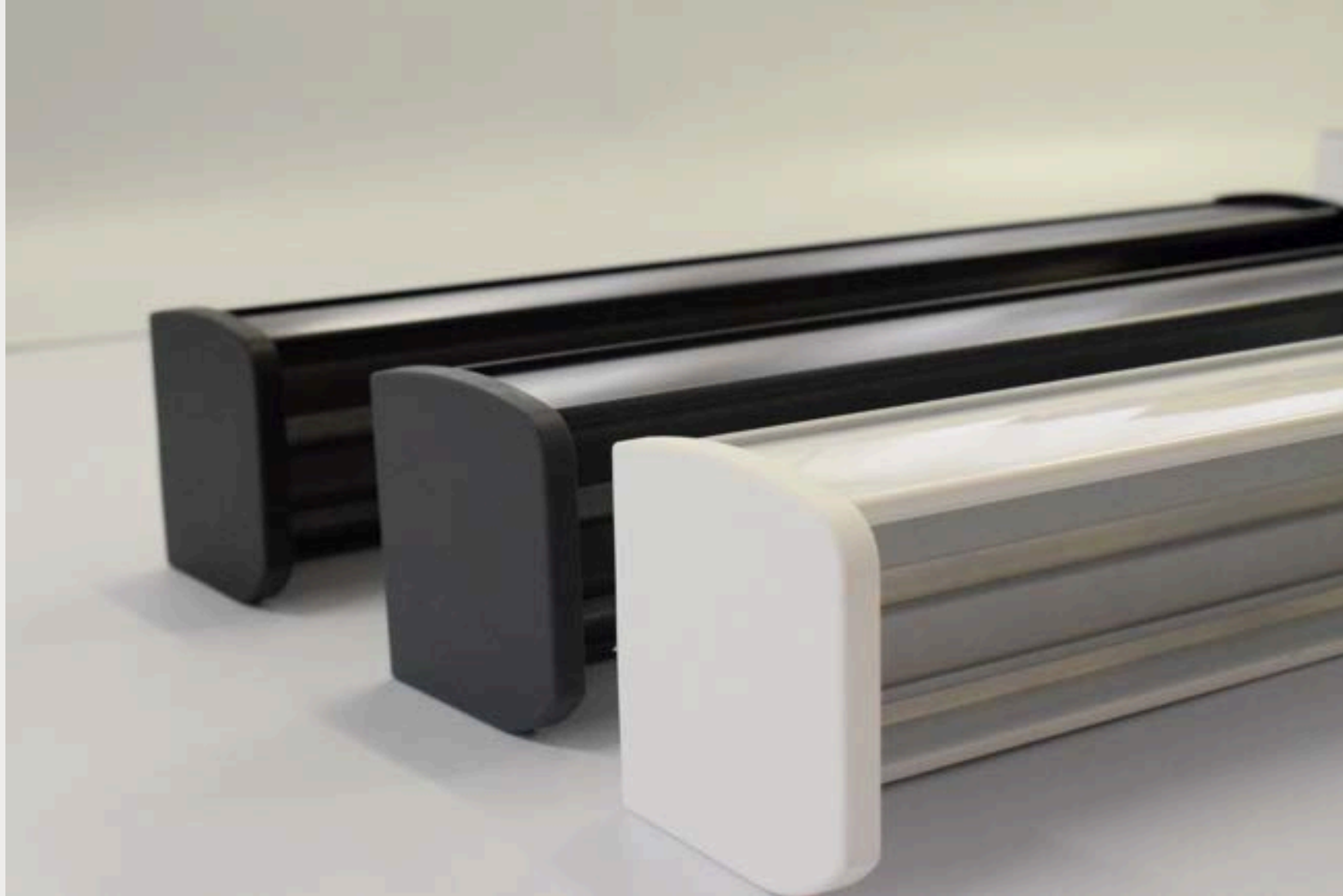
9



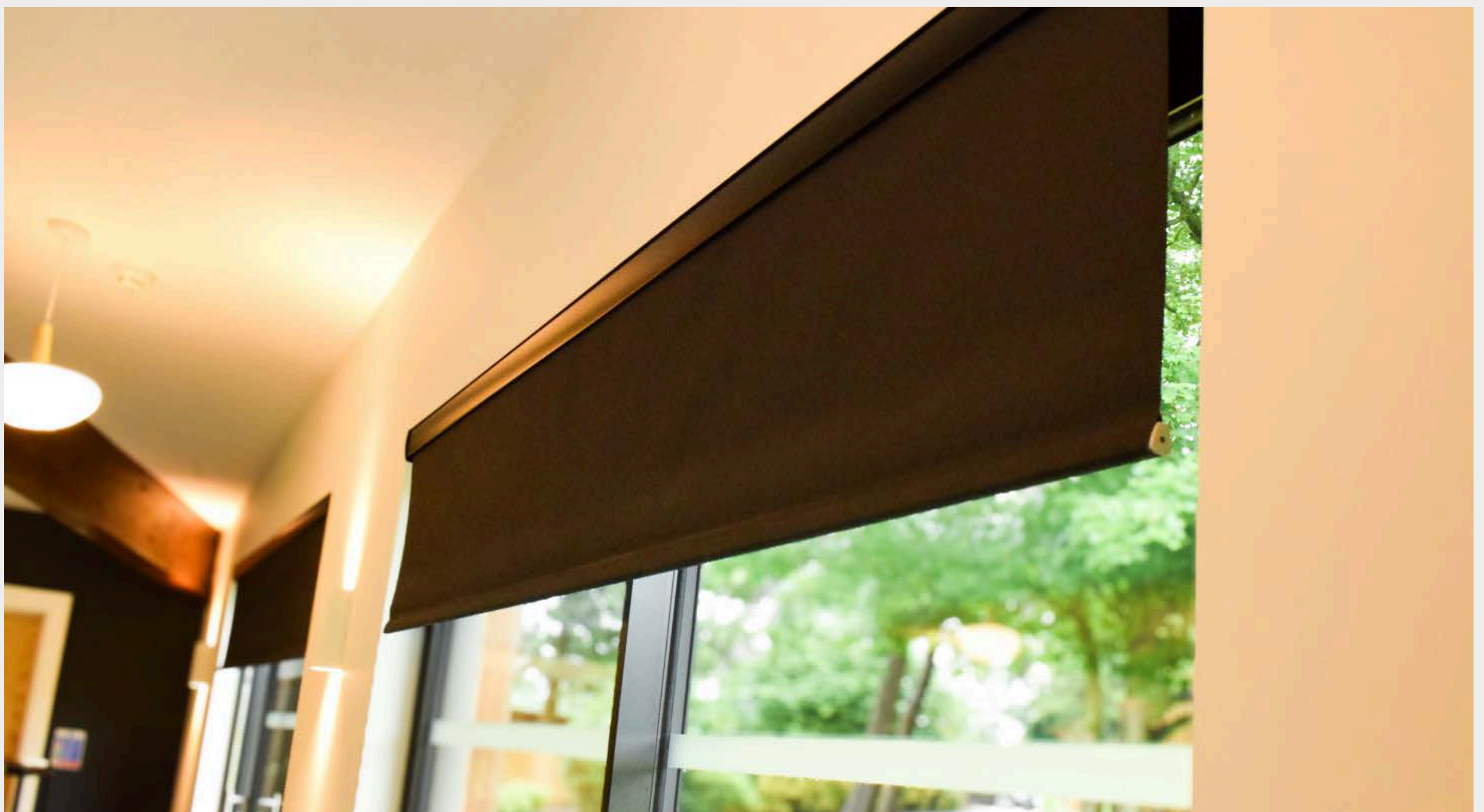


Accessories - Open Fascia

We have a number of accessories available to compliment, conceal and elevate your Blinds. Including our Open Fascias. They are available in three standard colours but can also be powder-coated to bespoke RAL finishes

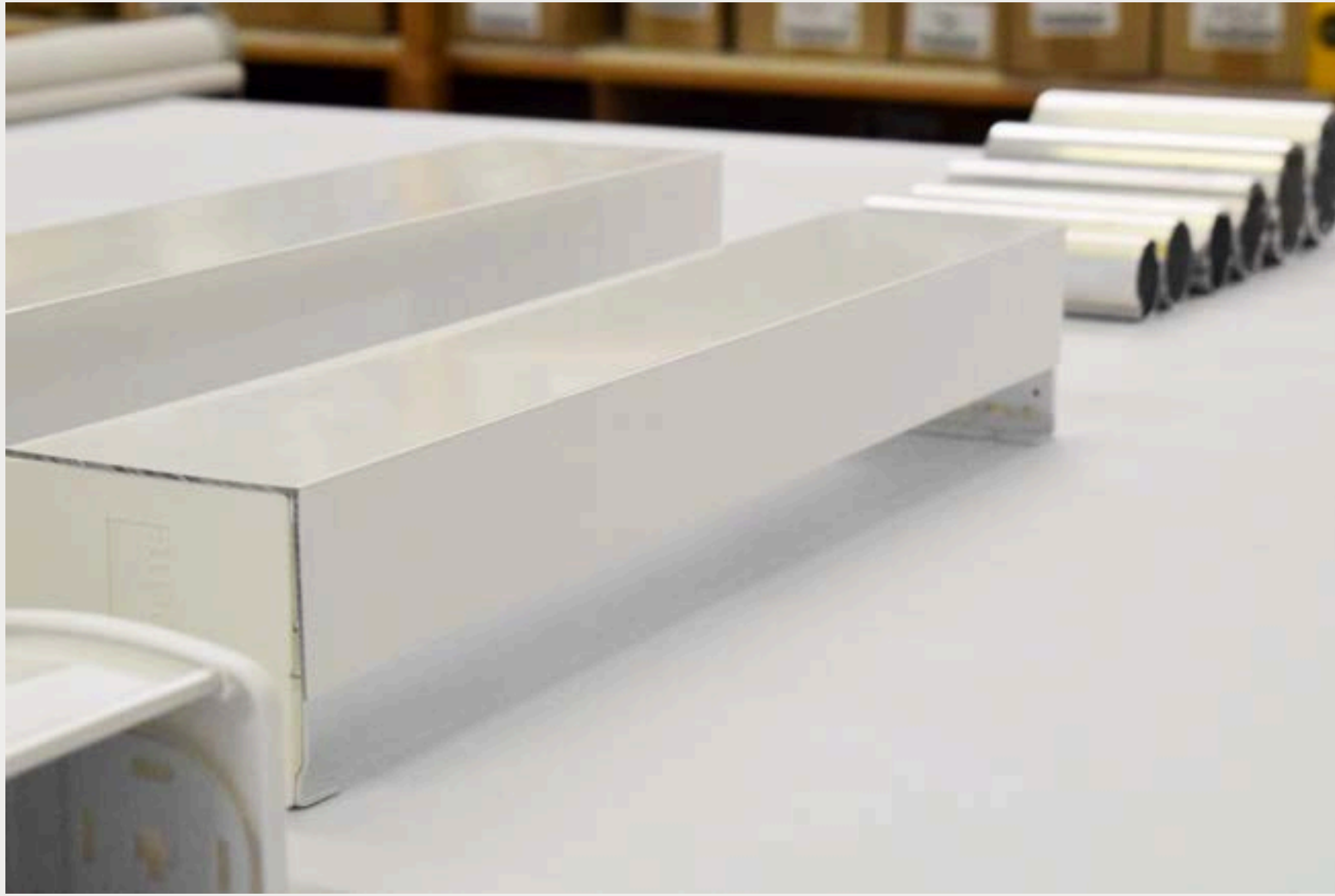


Open Fascia in Standard Finishes - White, Anthracite and Black

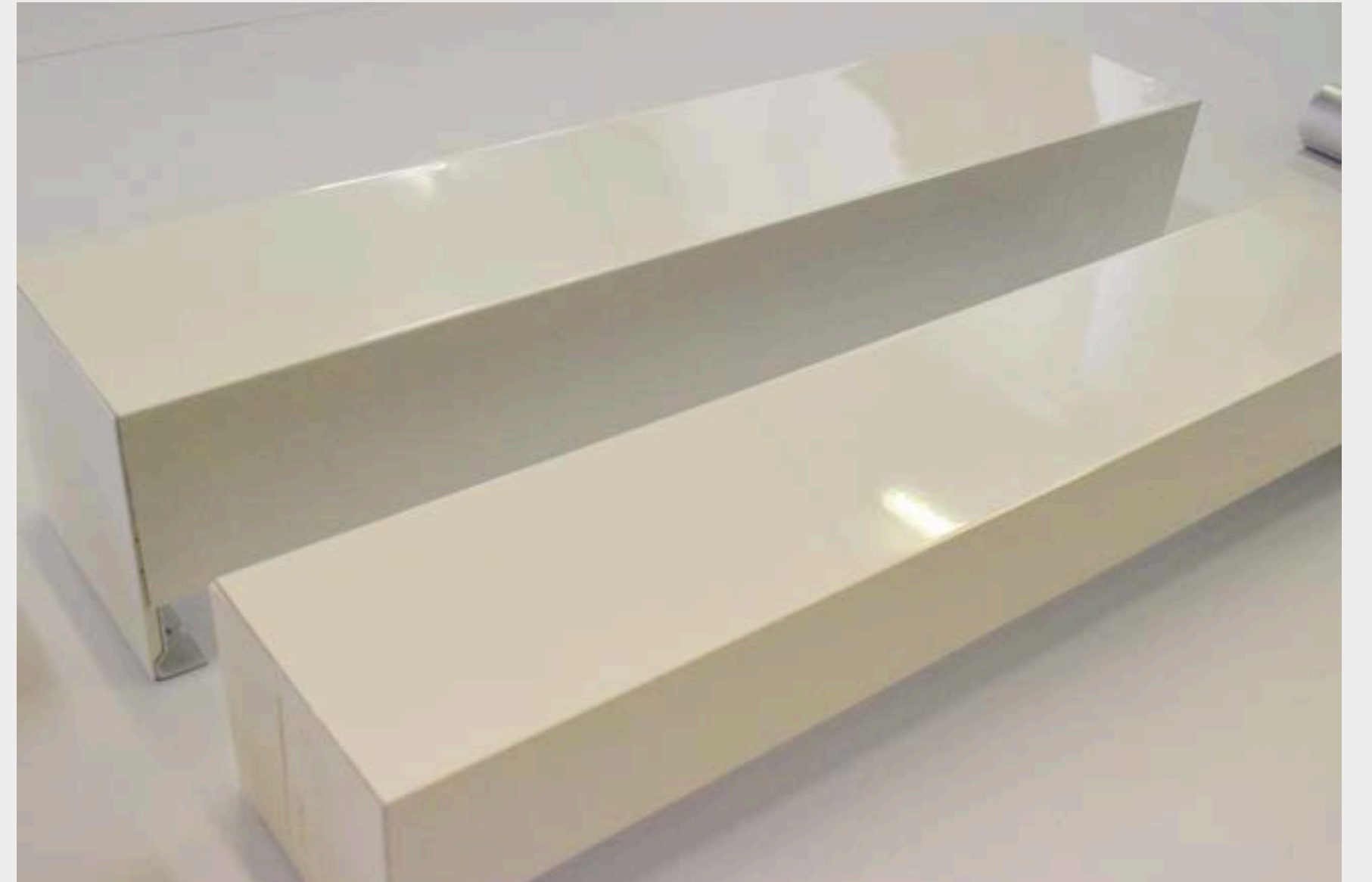


Accessories - Square Fascia

Our Square Fascia provides a seamless and elegant finish to our Roller Blind Systems. It comes as standard in a White but can also be powder-coated to bespoke RAL finishes.



Square Fascia in Standard Finish- White



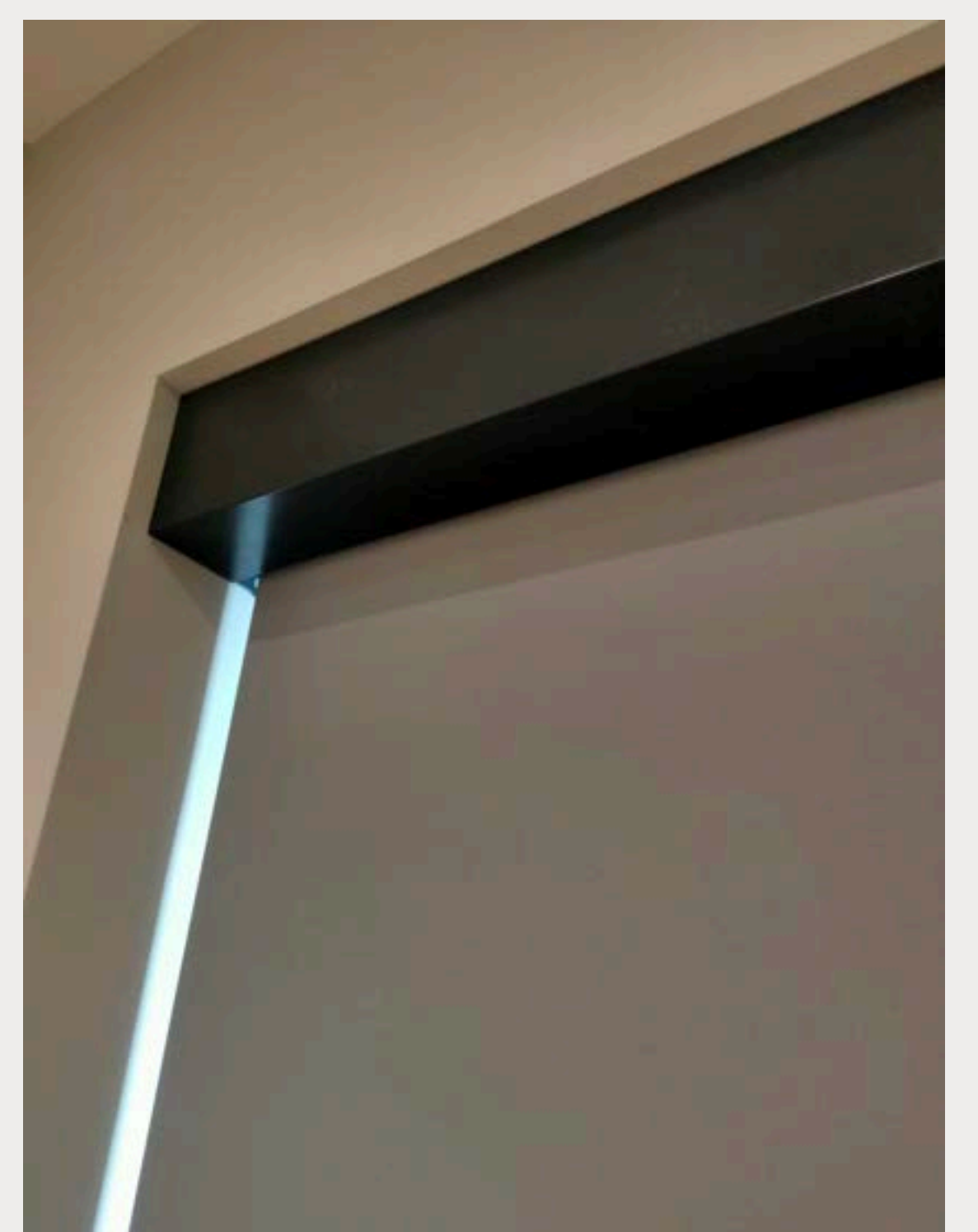
Square Fascia in Standard Finish- White



Chain operated Roller Blind with exposed bottom rail in Square Fascia Powder Coated Black



Motorised Roller Blind with pocketed bottom rail in Square Fascia - Standard Finish - White



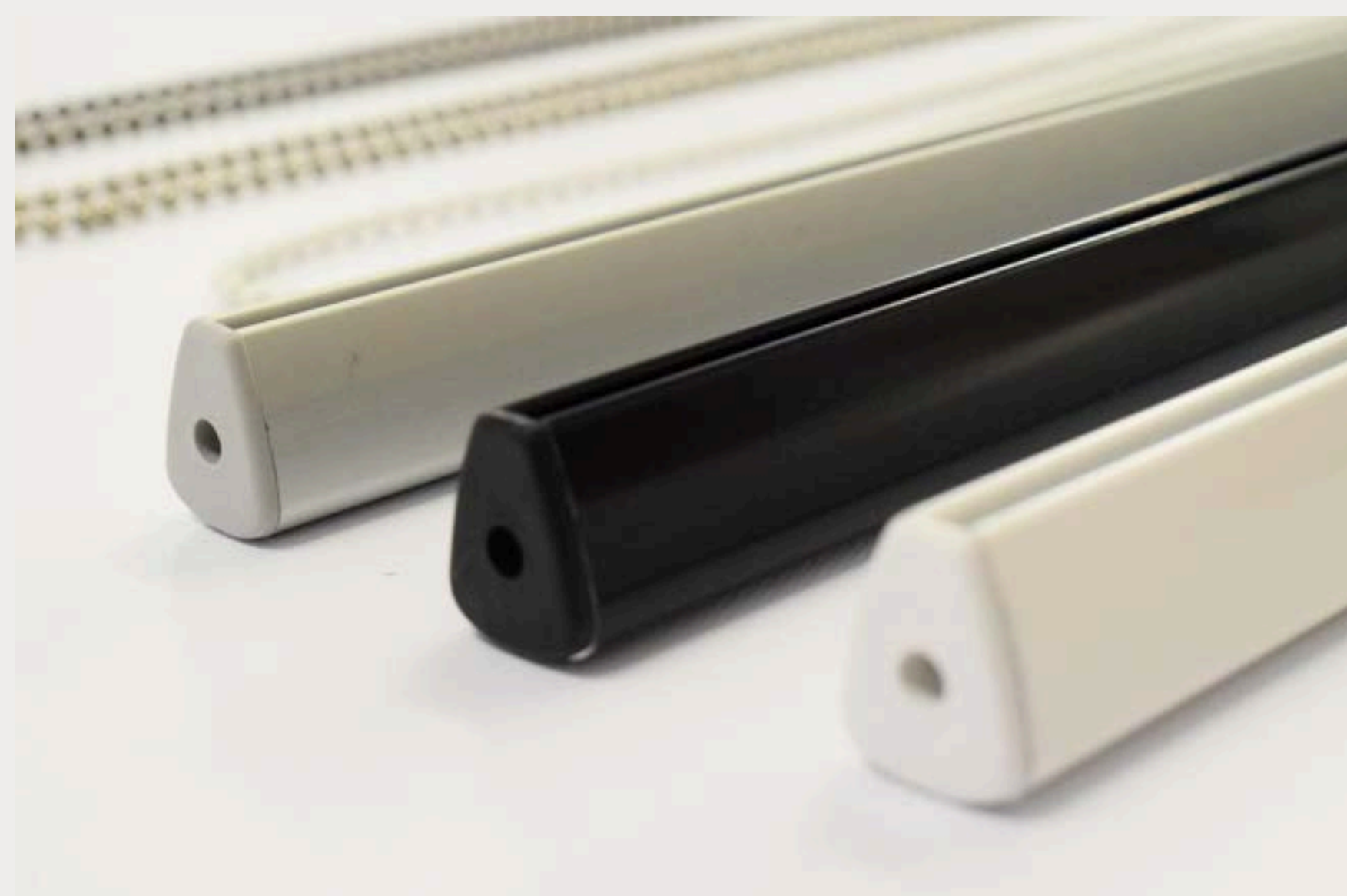
Roller Blind in Square Fascia Powder Coated Black



Motorised Roller Blinds in Square Fascia Powder Coated to specific RAL

Accessories - Chain & Bottom Rail

Saxon Blinds offers a bespoke service allowing you to fully customise your blinds with a range of options available including a collection of various Bottom Rail and Bead Chains.. Our accessories come in standard colours and finishes but can also be powder-coated to bespoke RAL finishes



Roller Blind with Exposed Bottom Rail in Black



Manual Chain Controls in Standard Colours: White Double Plastic Bead, Metal Nickel Chain Bead and Antique Brass Chain Bead



Roller Blind with Pocketed Sewn in Bottom Rail





Blindspace Concealment Boxes

Engineered for optimal functionality, the system includes two precision-crafted boxes, cover plate and the necessary cover plate hinges for secure installation. With a maximum profile length of 6 meters, the Blindspace Box can be effortlessly extended using Splice Pins and Plates, ensuring a continuous and flawless appearance across wider spans. Visit www.blindspace.com for more info.

BLINDSPACE BOX DIMENSIONS (cross section)

1 - Blindspace box with Flanges

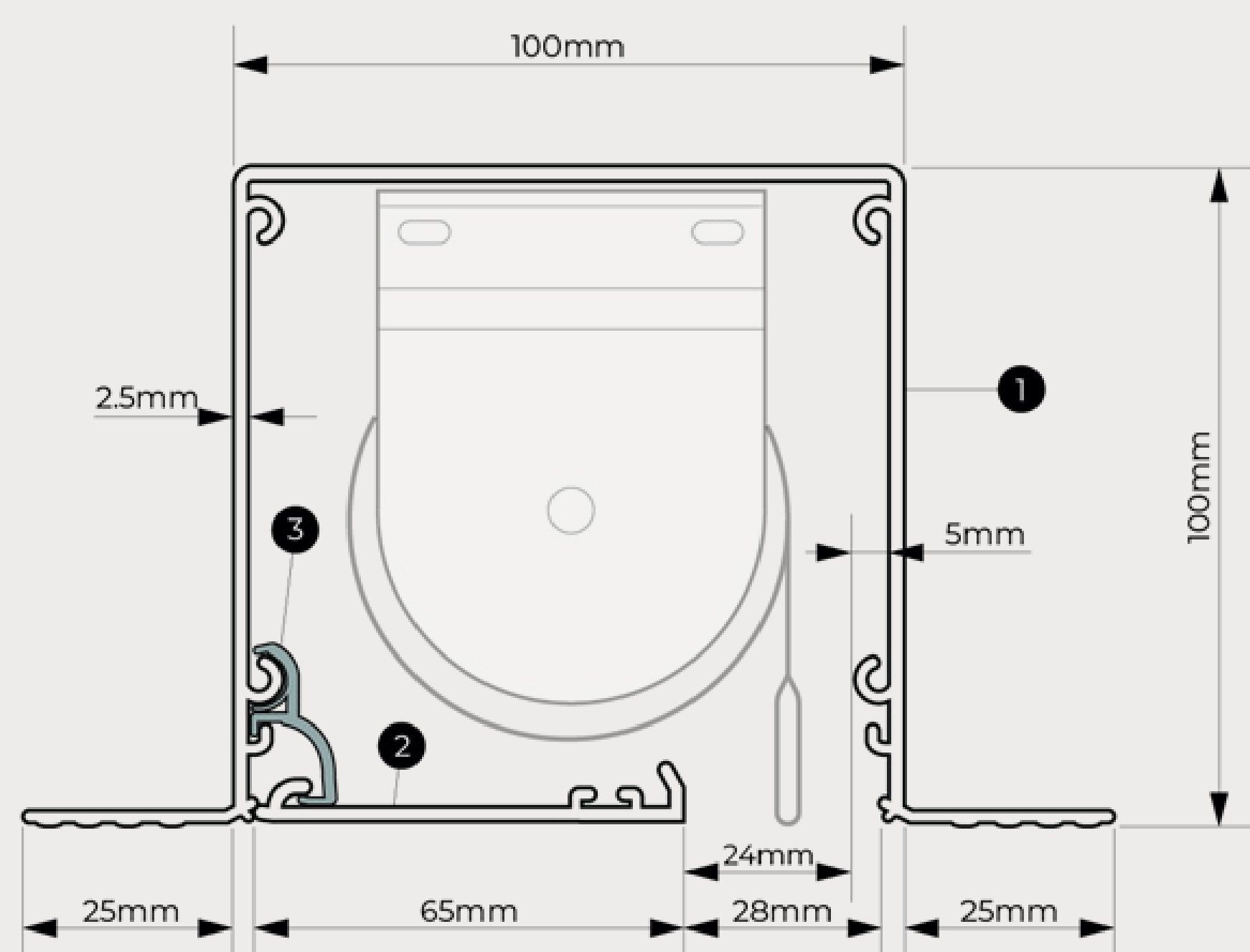
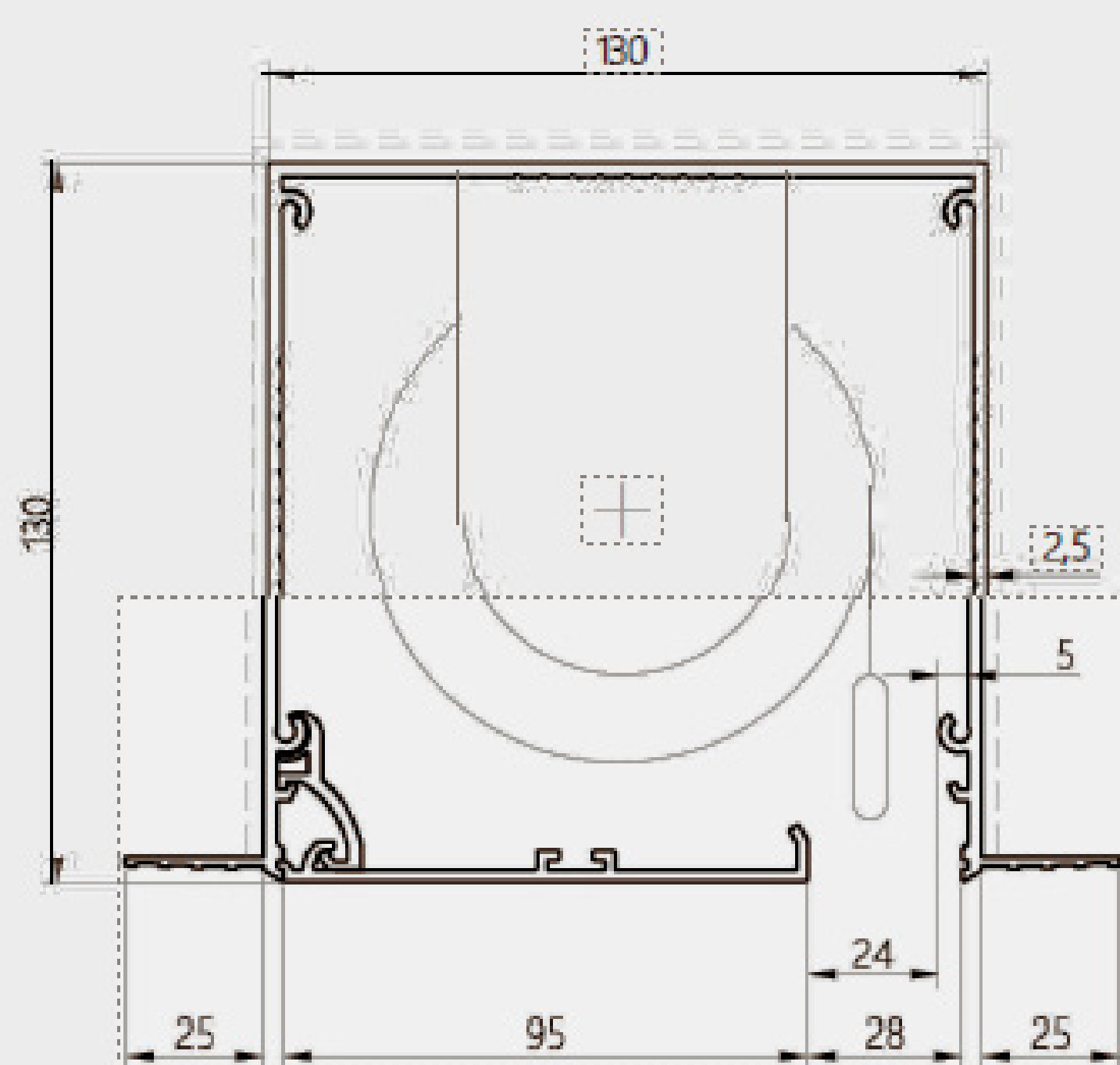
2 - Cover Plate

3 - Cover Plate Hinge

Box Options

The Blindspace box is available in three options: without flanges or with two different flange configurations. The flanges serve multiple essential functions in both installation and aesthetics. They provide a secure surface for fixing the box to the ceiling or recess, ensuring a stable and flush integration with the surrounding architecture. Additionally, they help create a seamless transition between the Blindspace box and the ceiling or wall, resulting in a clean and unobtrusive finish.

BL'NDSPACE®





Saxon Blinds Ltd

Somfy Motors



SOMFY TECHNICAL SPECIFICATIONS

As bespoke manufacturers of Motorised Blinds we are proud to partner with Somfy, the leading industry experts in Blind automation who offer a range of technology to suit a variety of installations, capable of controlling 1 to 200 Motorised Blinds working in unison, we have the solutions at the touch of a button.

With remote controlled operation, by way of hand held or wall mounted remotes, there will be no more running around your premises to lower / raise your Blinds. Our automated shading systems assist in the control of heat loss, heat gain, and lighting. Thus creating a comfortable environment. Over time, this can also be incredibly beneficial to your energy and cost efficiency statistics.

Intelligent automation

With Somfy products featuring wireless technology users gain more options and flexibility and can rest assured that products and services will integrate seamlessly. This means that all Somfy products can be controlled together with other building services using a single application via your laptop, smartphone, tablet or PC.

Somfy offers an evolutive solution through the Tahoma Switch offering native integration of the wireless RTS and Zigbee 3.0 protocols along with cloud compatibilities. From a touch of a button to an app control. Tahoma switch offers an accessible and scalable smart home solution. Tahoma Switch is also compatible with Google Assistant and Amazon Alexa enlarging the user experience to voice control. Zigbee has the benefit of being energy efficient. It's design reduces power while delivering excellent performance.

From The Somfy Range

These superb RTS motors have set a new standard for exceptionally quiet operation for motorised blinds.




INFO	DETAILS
SOUND LEVEL	< 47 dBA
RATED TORQUE	3 Nm 6 Nm 9 Nm
RATED SPEED	30 rpm 20 rpm 12 rpm
NOMINAL VOLTAGE	230v - 50Hz AC

Somfy Sonesse® 40 RTS



INFO	DETAILS
SOUND LEVEL	>38 dBA
RATED TORQUE	6 Nm 10 Nm
RATED SPEED	32 rpm 32 rpm
NOMINAL VOLTAGE	230v - 50Hz AC

Somfy Sonesse® 50 RTS



INFO	DETAILS
SOUND LEVEL	< 38 dBA
RATED TORQUE	2 Nm
RATED SPEED	10 rpm - 28 rpm
NOMINAL VOLTAGE	12V DC

Somfy Sonesse® Ultra Wirefree 30 Li-ion RTS



Product performance

Nominal torque..... 4 Nm
Nominal speed 20 rpm
Adjustable speed 10-28 by increment of 2 rpm
Sound level..... 40 dB(A)*
Radio protocol Zigbee
Radio frequency..... 433,42 MHz
Battery type 12V 5000mAh
Battery autonomy Only recharge once per year**
Low battery indicator LED

Somfy Sonesse® 40 Wirefree Zigbee Li-Lion



Product performance

Voltage 230V-50Hz
Nominal torque 3/6/9 Nm
Nominal speed 30/20/12 rpm
Adjustable speed..... 10-28 by increment of 2 rpm
Sound level..... ≤ 47 dB(A)*
Radio protocol..... Zigbee 3,0 ; Bluetooth 4,2
Radio frequency 2,4 GHz

Somfy Sonesse® 2 40 Zigbee



Product performance

Nominal torque..... 2 Nm
Nominal speed 20 rpm
Adjustable speed 10-28 by increment of 2 rpm
Sound level..... <42 dB(A)*
Radio protocol Zigbee
Radio frequency 2,4 GHz
Battery type 12V 2600 mAh (built-in Lithium-Ion)
Battery autonomy Only recharge once per year**
Recharging time <1,5 hours***
Low battery indicator LED

Somfy Sonesse® ULTRA 30 Wirefree Zigbee Li-Lion





Saxon Blinds Ltd

Somfy Controls & Switches



TELIS 16 RTS

- RTS radio 16 channel remote control.
- Allows individual control of up to 16 motors.
- Supplied with wall mount.



SITUO 1 RTS

- RTS radio 5 channel remote control.
- Allows control of a single motor.
- Supplied with wall mount.



SITUO 5 RTS

- RTS radio 5 channel remote control.
- Allows individual control of up to 5 motors.
- Supplied with wall mount.



SMOOVE ORIGIN RTS - Wall Switch

- RTS radio single channel remote control.
- Allows control of a single motor.
- Switch supplied with a mounting plate.



TaHoma switch - RTS, IO, Zigbee

- Centralise and control your home.
- Allows individual control of up to 200 products.



